



**LineJet™
Printers**

**LineJet™ Printer Manager
User's Guide**

Software License Agreement

CAREFULLY READ THE FOLLOWING TERMS AND CONDITIONS BEFORE USING THIS PRODUCT. INSTALLATION INDICATES YOUR ACCEPTANCE OF THESE TERMS AND CONDITIONS. PROMPTLY REMOVE ALL FILES RELATED TO THIS PRODUCT FROM YOUR HOST PLATFORM SHOULD YOU DISAGREE WITH ANY OF THE TERMS OR CONDITIONS LISTED BELOW.

1. "Software" shall mean the digitally encoded, machine-readable data and program. The term "Software Product" includes the Software identified on the distribution media and any accompanying documentation. The term "Distribution Media" refers to any method by which the Software Product is delivered to the end user, including but not limited to Floppy Disks, CD-ROM, Magnetic Tape and On-Line distribution via the Internet. The Software Product is licensed (not sold) to you, and Hewlett-Packard either owns or licenses from other vendors who own, all copyright, trade secret, patent and other proprietary rights in the Software Product.
2. You agree to accept a non-exclusive license to use the Software identified on the distribution media solely for your own customary business or personal purposes.
3. To protect the proprietary rights of Hewlett-Packard, you agree to maintain the Software Product and other proprietary information concerning the Software Product in strict confidence and to establish reasonable procedures regulating access to and use of the software.
4. You agree not to duplicate or copy the Software except that you may make one backup copy. You agree that any such copy shall contain the same proprietary notices as those appearing on the original.
5. You shall not sublicense, sell, lease, or otherwise transfer all or any portion of the Software Product separate from the printer(s), without the prior written consent of Hewlett-Packard.
6. You may not modify or prepare derivative works of the Software Product. You may not transmit the Software Product over a network, by telephone, or electronically using any means; or reverse engineer, decompile or disassemble the Software.
7. You may transfer the Software Product with the printer(s), but only if the recipient agrees to accept the terms and conditions of this Agreement. Your license is automatically terminated if you transfer the Software Product and printer(s).
8. This License shall continue until terminated. This license may be terminated by agreement between you and Hewlett-Packard or by Hewlett-Packard if you fail to comply with the terms of this License and such failure is not corrected within thirty (30) days after notice. When this License is terminated, you shall either return to the place you obtained them, or destroy, the printer and all copies of the Software and documentation.
9. Hewlett-Packard warrants that for ninety (90) days after delivery, the Software will perform in accordance with specifications published by Hewlett-Packard, and that the distribution media will be free from defects in material and workmanship. Hewlett-Packard does not warrant that the Software is free from all bugs, errors and omissions.

THE PARTIES AGREE THAT ALL OTHER WARRANTIES, EXPRESS OR IMPLIED, INCLUDING WARRANTIES OF FITNESS FOR A PARTICULAR PURPOSE AND MERCHANTABILITY ARE EXCLUDED.

10. Your exclusive remedy and the sole liability of Hewlett-Packard in connection with the Software is replacement of defective distribution media upon their return to Hewlett-Packard. Hewlett-Packard will not be liable for any loss or damage caused by delay in furnishing a Software Product or any other performance under this Agreement.

Hewlett-Packard does not warrant that the functions contained in the Software will meet your requirements or that the operation of the Software will be uninterrupted or error free.

Hewlett-Packard reserves the right to make changes and/or improvements in the Software without notice at any time.

IN NO EVENT WILL HEWLETT-PACKARD BE LIABLE FOR LOST PROFITS, LOST DATA, BUSINESS INTERRUPTIONS OR ANY OTHER DIRECT, INDIRECT, INCIDENTAL OR CONSEQUENTIAL DAMAGES ARISING OUT OF THE USE OF OR INABILITY TO USE THIS PRODUCT, EVEN IF HEWLETT-PACKARD HAS BEEN ADVISED OF THE POSSIBILITY OF SUCH DAMAGES, OR ANY DAMAGES CAUSED BY ABUSE OR MANIPULATION OF THE SOFTWARE. SOME STATES DO NOT ALLOW THE EXCLUSION OR LIMITATION OF LIABILITY FOR CONSEQUENTIAL OR INCIDENTAL DAMAGES, SO THE ABOVE LIMITATION MAY NOT APPLY TO YOU.

11. California law governs this Agreement.
12. Use, duplication or disclosure by the Government is subject to restrictions as set forth in the Rights in Technical Data and Computer Software clause at FAR 242.227-7013, subdivision (b) (3) (ii) or subparagraph (c) (1) (ii), as appropriate. Further use, duplication or disclosure is subject to restrictions applicable to restricted rights software as set forth in FAR 52.227-19 (c) (2).

YOU ACKNOWLEDGE THAT YOU HAVE READ THIS AGREEMENT, UNDERSTAND IT, AND AGREE TO BE BOUND BY ITS TERMS AND CONDITIONS. NEITHER PARTY SHALL BE BOUND BY ANY STATEMENT OR REPRESENTATION NOT CONTAINED IN THIS AGREEMENT. NO CHANGE IN THIS AGREEMENT IS EFFECTIVE UNLESS WRITTEN AND SIGNED BY PROPERLY AUTHORIZED REPRESENTATIVES OF EACH PARTY. BY INSTALLING THIS SOFTWARE PRODUCT, YOU AGREE TO ACCEPT THE TERMS AND-CONDITIONS OF THIS AGREEMENT.

Hewlett-Packard makes no representations or warranties of any kind regarding this material, including, but not limited to, implied warranties of merchantability and fitness for a particular purpose. Hewlett-Packard shall not be held responsible for errors contained herein or any omissions from this material or for any damages, whether direct, indirect, incidental or consequential, in connection with the furnishing, distribution, performance or use of this material. The information in this manual is subject to change without notice.

This document contains proprietary information protected by copyright. No part of this document may be reproduced, copied, translated or incorporated in any other material in any form or by any means, whether manual, graphic, electronic, mechanical or otherwise, without the prior written consent of Hewlett-Packard.

COPYRIGHT © 2000, HEWLETT-PACKARD CO.

All rights reserved.

Trademark Acknowledgements

Printronix, IGP, PGL, PrintNet and LinePrinter Plus are registered trademarks, and RibbonMinder is a trademark of Printronix, Inc.

Hewlett-Packard, HP, HP in a circle, and HP rounded rectangle are registered trademarks, and LineJet is a trademark of Hewlett-Packard Company.

Solaris is a registered trademark of Sun Microsystems, Inc.

Microsoft, Windows 95, Windows 98 and Windows NT are registered trademarks of Microsoft Corporation.

Unix is a registered trademark of X/Open Company Limited.

Code V is a trademark of Quality Micro Systems, Inc.

Ethernet is a trademark of Xerox Corporation.

Centronics is a registered trademark of Genicom Corporation.

Dataproducts is a registered trademark of Dataproducts Corporation.



Table of Contents

1	Overview.....	6
	The LineJet Printer Manager Software.....	6
	Requirements	6
	Installing the Printer Manager.....	6
	Printer Setup.....	7
	Getting Started.....	8
2	Printer Database.....	14
	Overview.....	14
	Defining Printer Properties.....	16
	Identification Tab	17
	Security Tab	17
	Connections Tab	17
	Access Method Tab	17
	Network Tab.....	18
	Toolbar.....	19
	Managing the Database.....	20
	Database Items	20
	The Edit Menu	20
	Insert.....	21
	Cut	21
	Copy.....	21
	Paste.....	22
	Delete.....	22
	Include/Exclude.....	22
	Downloading Files	23
	Downloading Files Examples.....	24
	Locating Printers on a Network.....	28
	Printer Database Menu Bar	30
	File.....	30

Table of Contents

Edit	33
View	33
Applications	33
Status	34
Utilities.....	35
Help.....	35
3 Applications	36
Operator Panel	36
Primary/Secondary Operator Keys	37
Message Display	37
Status Indicator	38
Disabled Indicator	38
In Progress Indicator	38
Information Capture.....	39
File	40
Configuration Printout	40
Error Log	40
Directory.....	40
Configuration Editor.....	41
Menu Tree.....	42
Creating Configurations	42
Changing Configurations.....	43
Making Changes on Menu Tree	43
Menu Editor	44
Deleting Configurations	45
Naming Configurations	45
Hiding/Unhiding Menu Items.....	45
Saving Configuration Files	47
Opening Configuration Files.....	47
Downloading Configurations	47
Revert.....	48
Barcode Verification	48
Configuration Download/File Download	48

1

Overview

The LineJet Printer Manager Software

The LineJet™ printer manager utility is a versatile and dynamic program. It allows you to organize all of the printers in your office remotely in a single database, download software and printer settings from a host computer with a single mouse click, and use a virtual operator's panel to configure printers in the same room or on the other side of the world.

Requirements

Running the LineJet printer manager software requires:

- a LineJet printer
- a host computer running Microsoft® Windows 95®, Windows 98®, Windows NT® or Unix® Solaris® operating system

Before installing the software, the printer must be attached to the host system via a LineJet Print Server (Ethernet™) interface. Refer to your printer *User's Guide* for information on connecting interfaces.

Installing the Printer Manager

The printer manager can be obtained from the HP World Wide Web site at http://www.hp.com/go/lp_printers. Follow the on-screen instructions for downloading and installing the software.

For Windows 95/98/NT users: When the program completes its installation, you may get a message stating that a program icon was created in your Start menu. Actually, the program only creates a shortcut icon on your desktop. If you would like an icon in your Start menu, you will have to create it manually.

Printer Setup

Your printer uses the diagnostic port to communicate with the printer manager. The diagnostic port must be configured to interact with the Ethernet interface. Follow the instructions below to check the diagnostic port setting.

1. On the printer control panel, press the ON LINE key to take the printer off line.
2. Press the UP (↑) and DOWN (↓) keys at the same time to unlock the ENTER key.
3. Enter the Factory Menu by pressing the ↓, ↑, ← and → keys at the same time.
4. The PRINTER MGMT menu appears. Press the ↓ key until the “Diagnostic Port” option displays. (If the “Debug Ethernet” option is already marked with an asterisk (*), there is no action needed. Skip to step 6.)
5. Press the → key until the “Debug Ethernet” option appears. Press ENTER to select this option.
6. Press the UP (↑) and DOWN (↓) keys at the same time to lock the ENTER key.
7. Press the ON LINE key to put the printer back on line.

Getting Started

This section provides a short tutorial on how to set up and access a printer using the printer manager utility.

8. This tutorial assumes the host computer running the printer manager utility and the printer you want to access are connected by a network. You must know the printer's IP Address and Port Number.
9. From your operating system, open the printer manager. A brief splash screen appears, then the main screen of the Printer Database, as shown in [Figure 1](#).

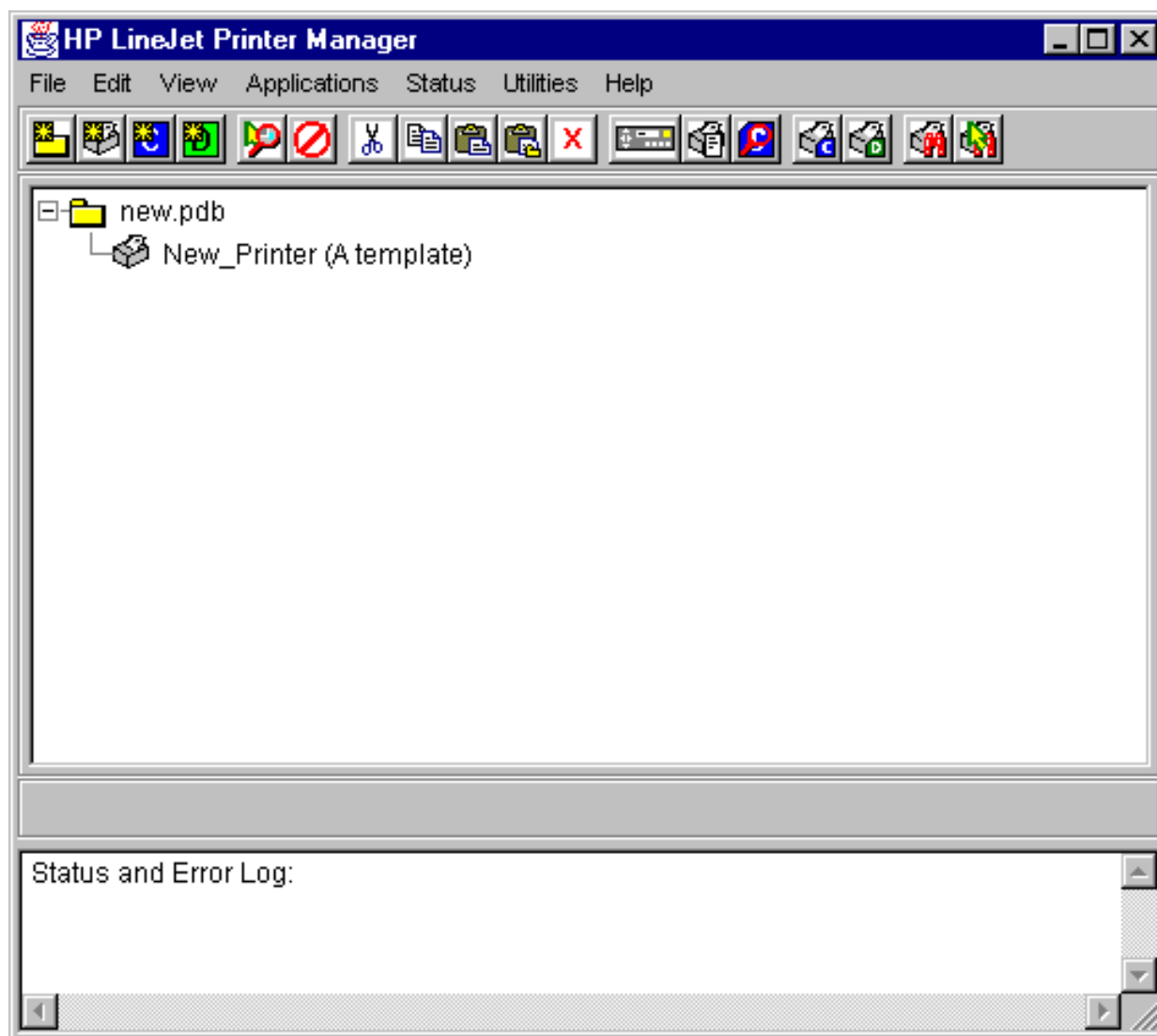


Figure 1. Printer Database Main Window

10. Double-click on the “New_Printer (A template)” icon. The Printer Properties window appears, as shown in [Figure 2](#).

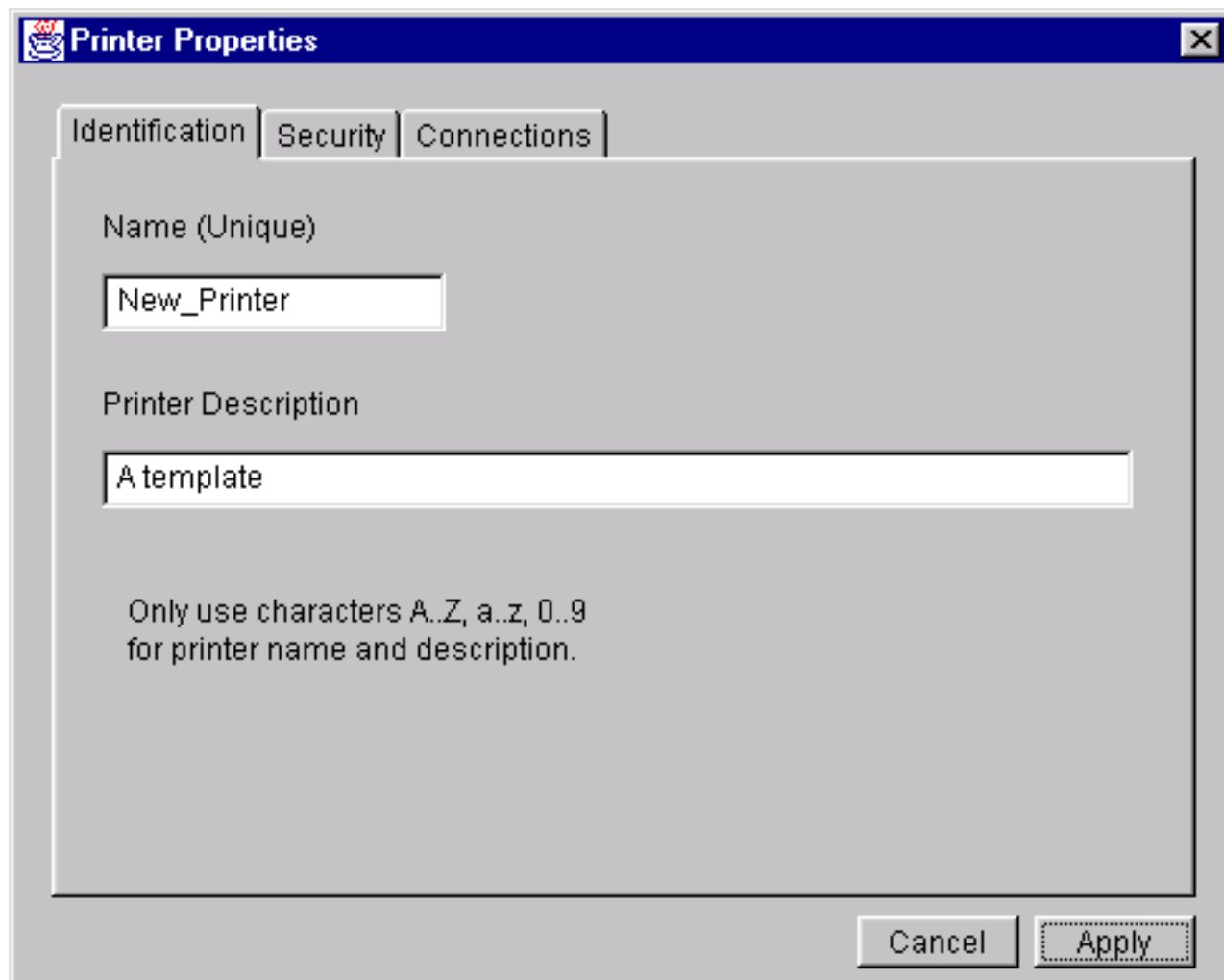


Figure 2. Printer Properties (Identification)

11. Assign a name to your printer. Click inside the Name(Unique) box and delete the words “New_Printer”. Type in “Tutorial”.
12. Assign a description to this printer. Click inside the Printer Description box and delete the words “A template”. Type in “My First Connection”.

- Click on the tab at the top of the window that reads, "Security." The Printer Properties window changes to the Security screen. See [Figure 3](#).

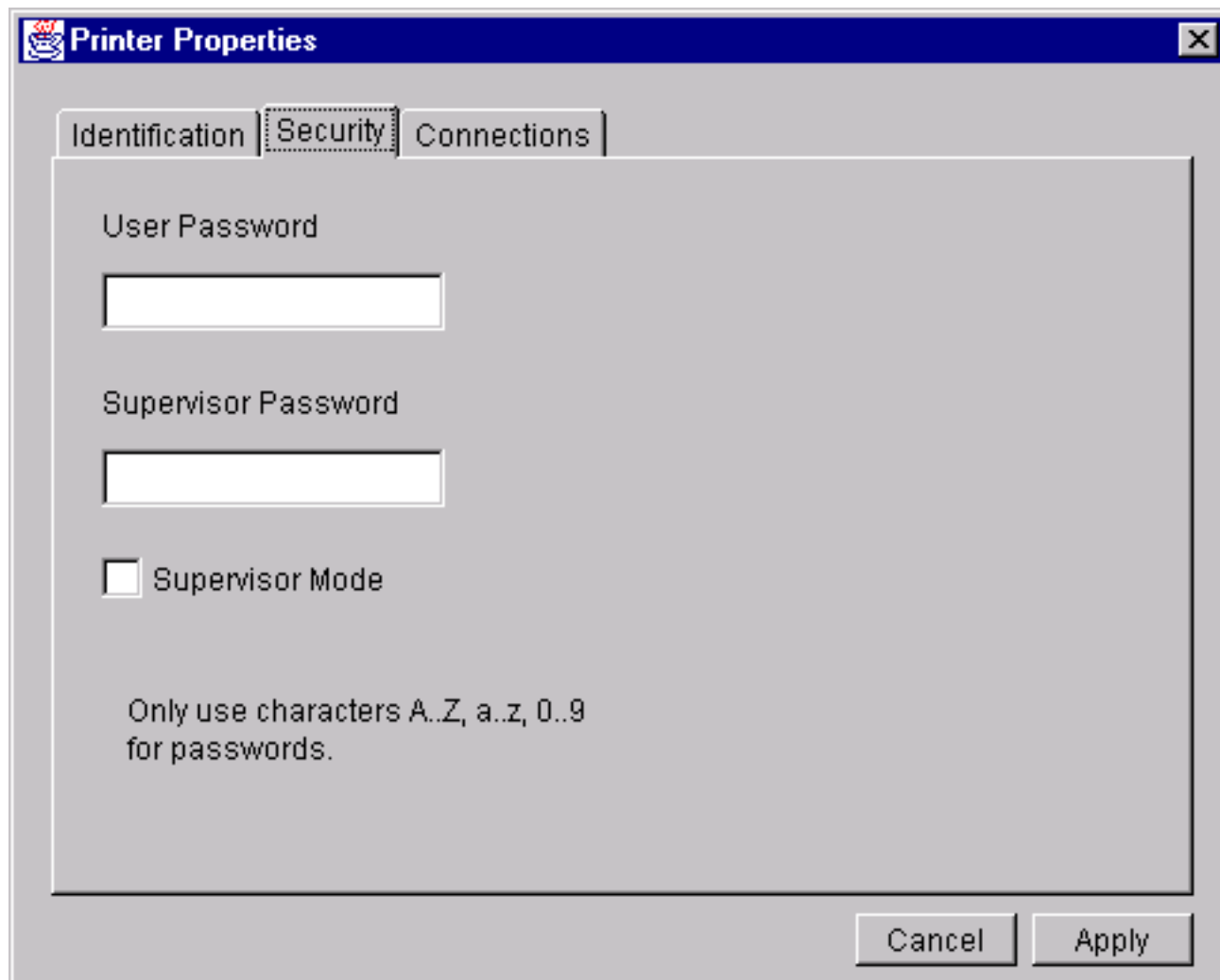


Figure 3. Printer Properties (Security)

- If this is the first time the printer manager is being used, it is likely that no passwords have been assigned to this printer. If you are unsure, contact your system administrator.
 - If no password is assigned, leave both password boxes empty.
 - If a User password is necessary to access this printer, input the password in the User Password box.
 - If a Supervisor password is necessary to access this printer, input the password in the Supervisor Password box, and check the box next to Supervisor Mode.

In either case, an asterisk (*) character will appear in the box after each letter you type to preserve the password's secrecy.

15. Click on the tab at the top of the window that reads, “Connections.” The Printer Properties window changes to the Connections screen. See [Figure 4](#).

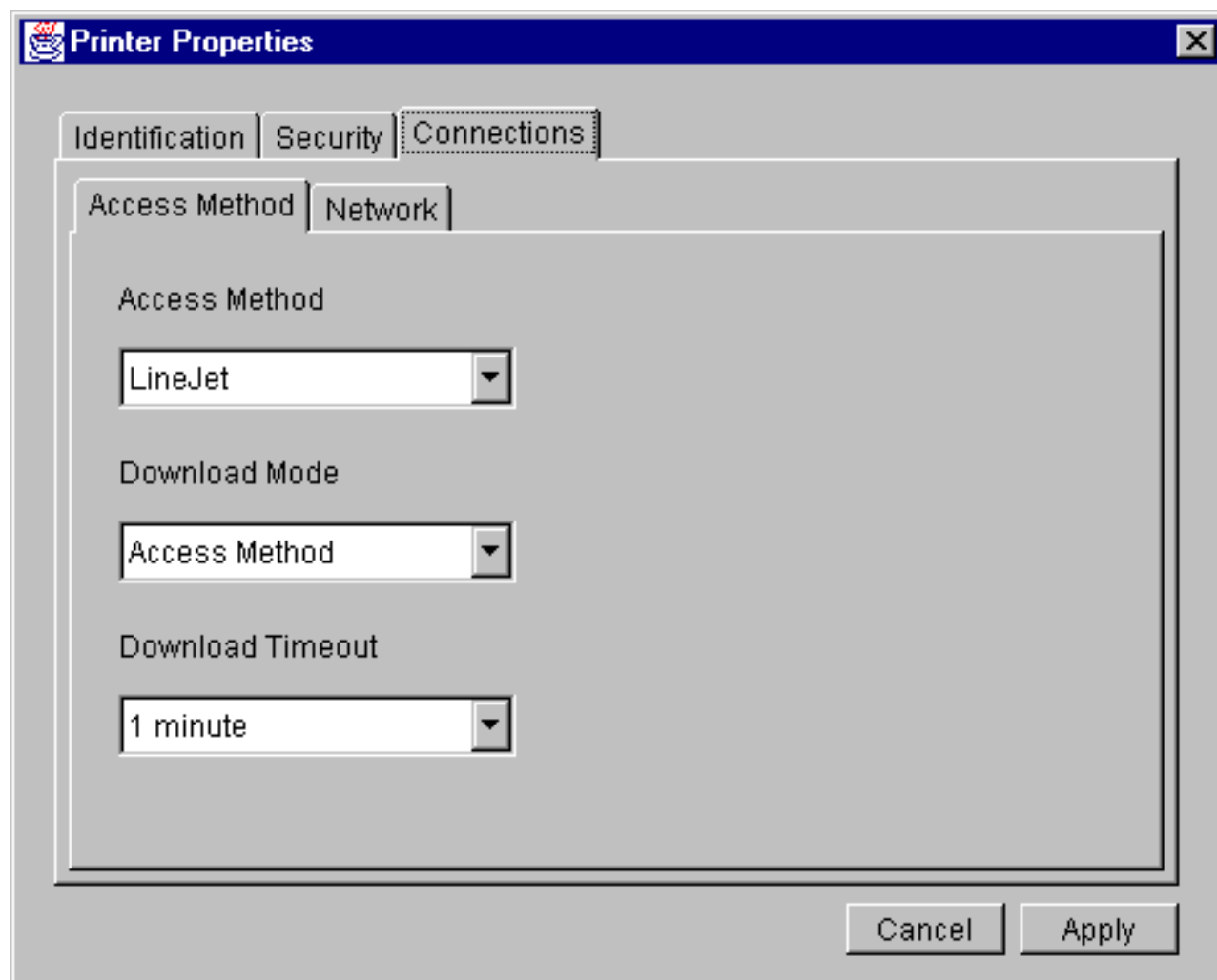


Figure 4. Printer Properties (Connections)

16. The Connections screen contains two additional tabs, “Access Method” and “Network”. The Access Method you choose tells the printer manager how the host computer will communicate with the printer. For the Administration Package of the printer manager, “LineJet” is the only Access Method available.
17. Ignore the Download Mode and Download Timeout pull-down menus for now.

- Click on the Network tab at the top of the Printer Properties window.
See [Figure 5](#).

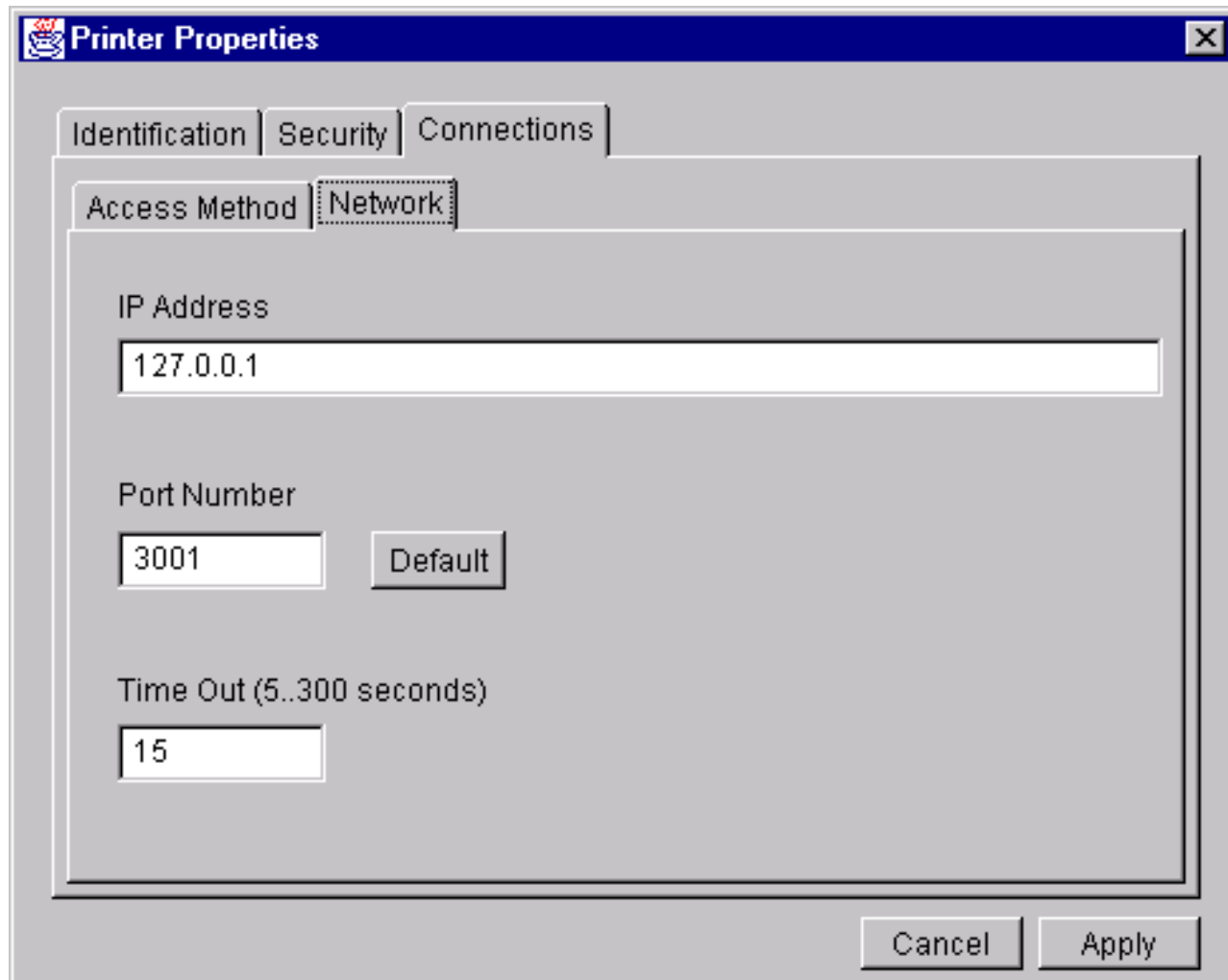


Figure 5. Network Options

- Click in the IP Address box. Input the IP Address of the printer you want to access. Follow the format shown in [Figure 5](#).
- Leave the Port Number box set at 3001.
- Leave the Time Out box set at 15 seconds.

22. Click Apply. This closes the Printer Properties window and returns you to the Printer Database main screen. Your printer is now set up in the printer manager database.

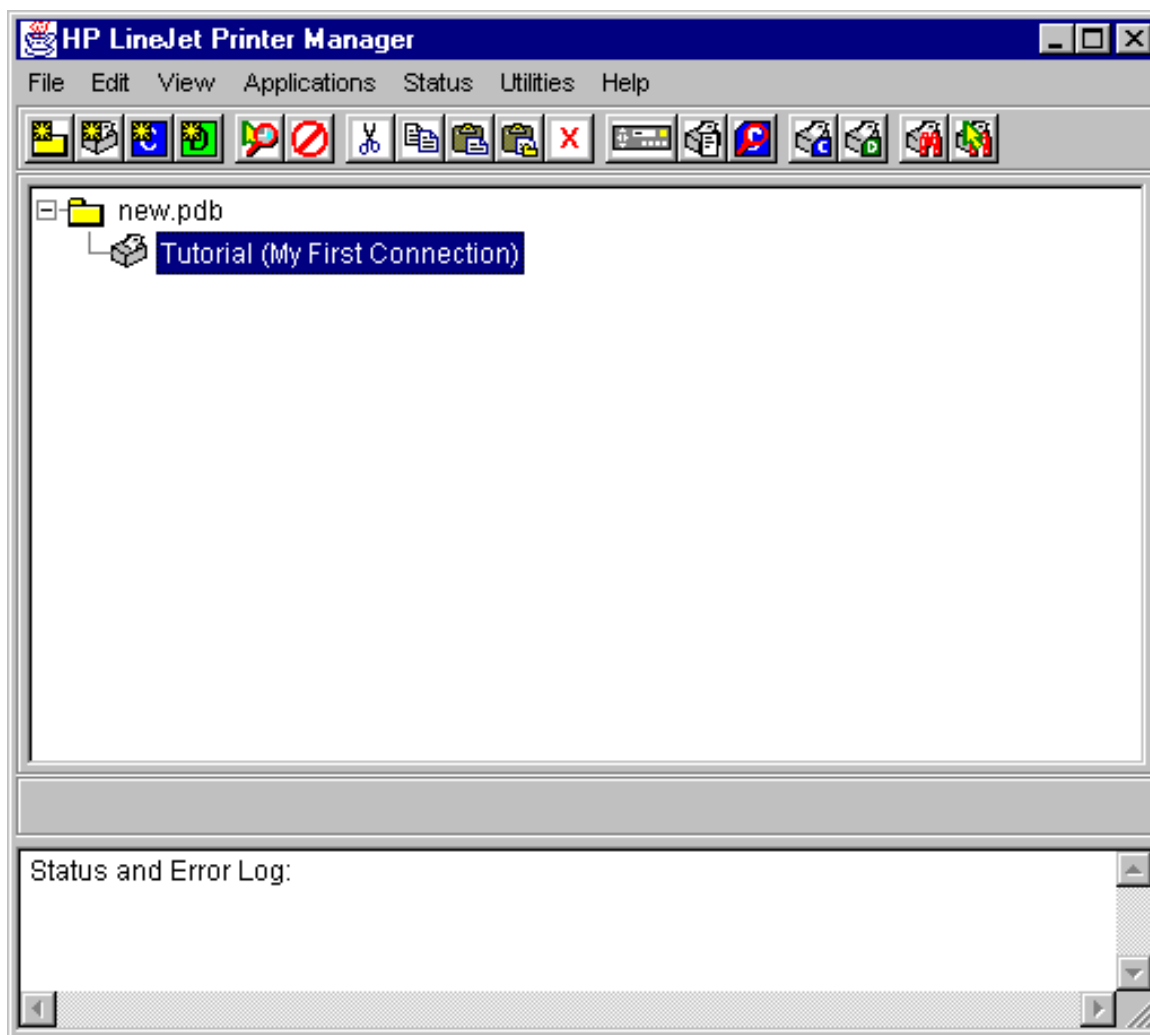


Figure 6. Printer Database Main Window

23. You can try to access the printer's virtual operator panel as a test to see if the information you input is accurate. Follow this procedure:
 - a. The "Tutorial (My First Connection)" icon should be highlighted in blue, as shown in [Figure 6](#). If it is not highlighted, click on the icon once to select it.
 - b. From the menu bar at the top of the window, click on **Applications**.
 - c. From the pull-down menu, click on **Operator Panel**. If the setup procedure was successful, the printer's virtual operator panel should appear (see [page 36](#)). Otherwise, an error message will appear in the Status and Error Log. In the event of an error message, contact your system administrator.

2

Printer Database

Overview

When you start the printer manager, the first screen which appears is the Printer Database window. The Printer Database is the tool used to organize and control printers, configuration files, and download files. [Figure 7](#) displays how the database looks when you begin the printer manager for the first time.

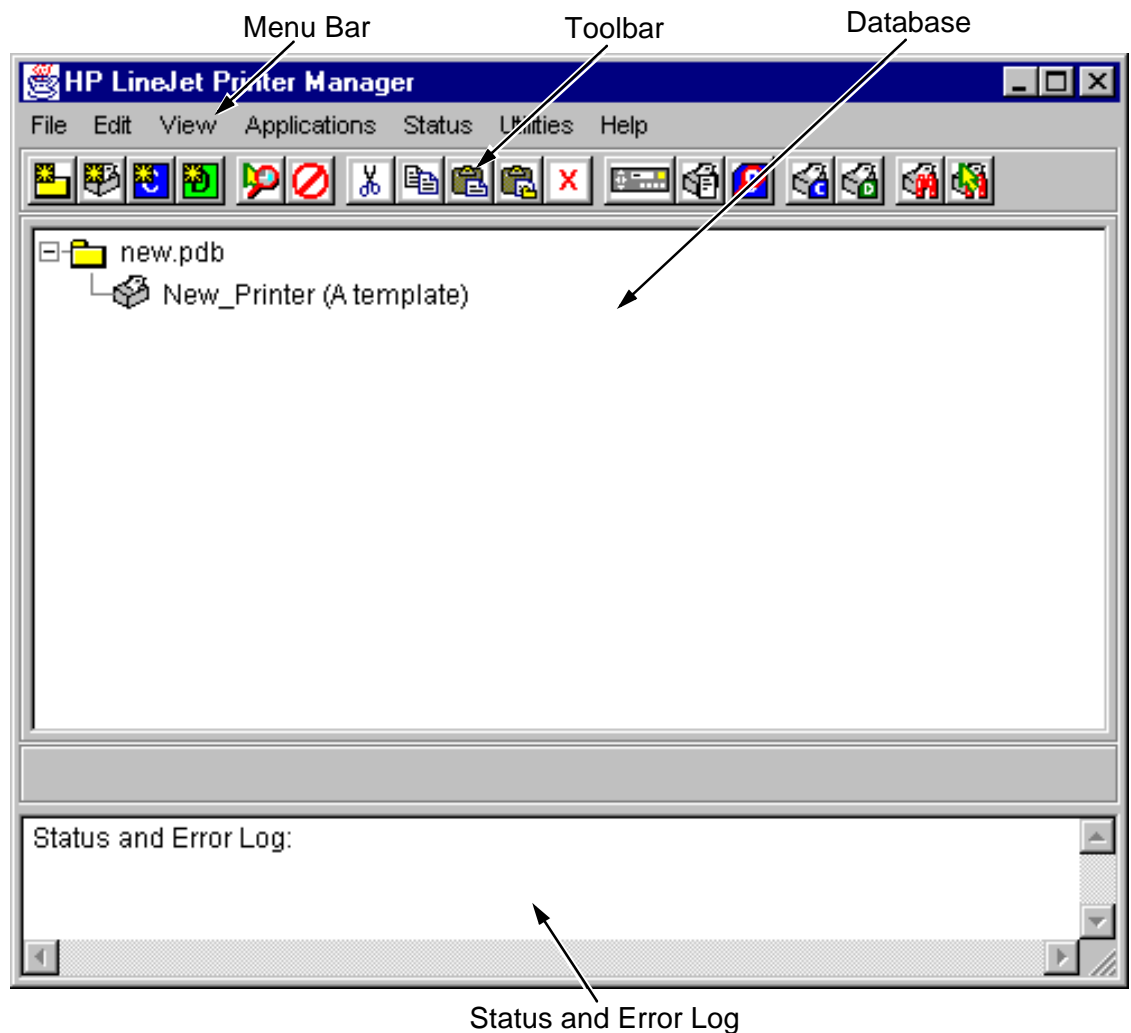


Figure 7. Printer Database Main Window

NOTE:The first time you start the printer manager, you may get the error message, “Printer Database Not Found.” This error occurs because there is no database file specified as the default. To specify a default database in the Preferences menu, see [page 31](#).

The Menu Bar contains all the menus which are used to control the functions of the program. The menus will be described in detail later in this chapter.

The Toolbar contains iconized shortcuts of the most commonly used menu functions. See [page 19](#) for descriptions of the Toolbar icons.

The Database is the heart of the program, where you will access and control all of your printers in a tree format. The first line of the database tree displays the database file name. In [Figure 7](#), the file name for this database is `new.pdb`. From there, your database tree will branch out to include printers, folders, configuration files and download files, which may be organized in groups; with a single mouse click, a file can be downloaded to several printers at once. In addition, you may use as many databases with the printer manager as you wish; databases can be saved as `.pdb` files on your local hard drive. Only one printer database may be opened at a time.

The Status and Error Log will scroll status and error messages as you work through the program. If the printer manager is not functioning properly, be sure to look at this window for any error messages which may appear. Use the scroll bar on the side of this window to reference previous status and error messages. The status and error messages relate to the current printer manager session, not to the specific database. When you close the printer manager, these messages will not be saved.

Defining Printer Properties

Before using any of the applications of the printer manager, you must define the printer's properties, which includes identifying the printer and configuring how the printer communicates with the printer manager. To define a printer, double-click on the printer's name in the Printer Database. The first time you run the program, you will double-click on "New_Printer (A template)". This will bring up the Printer Properties window. (See [Figure 8.](#))

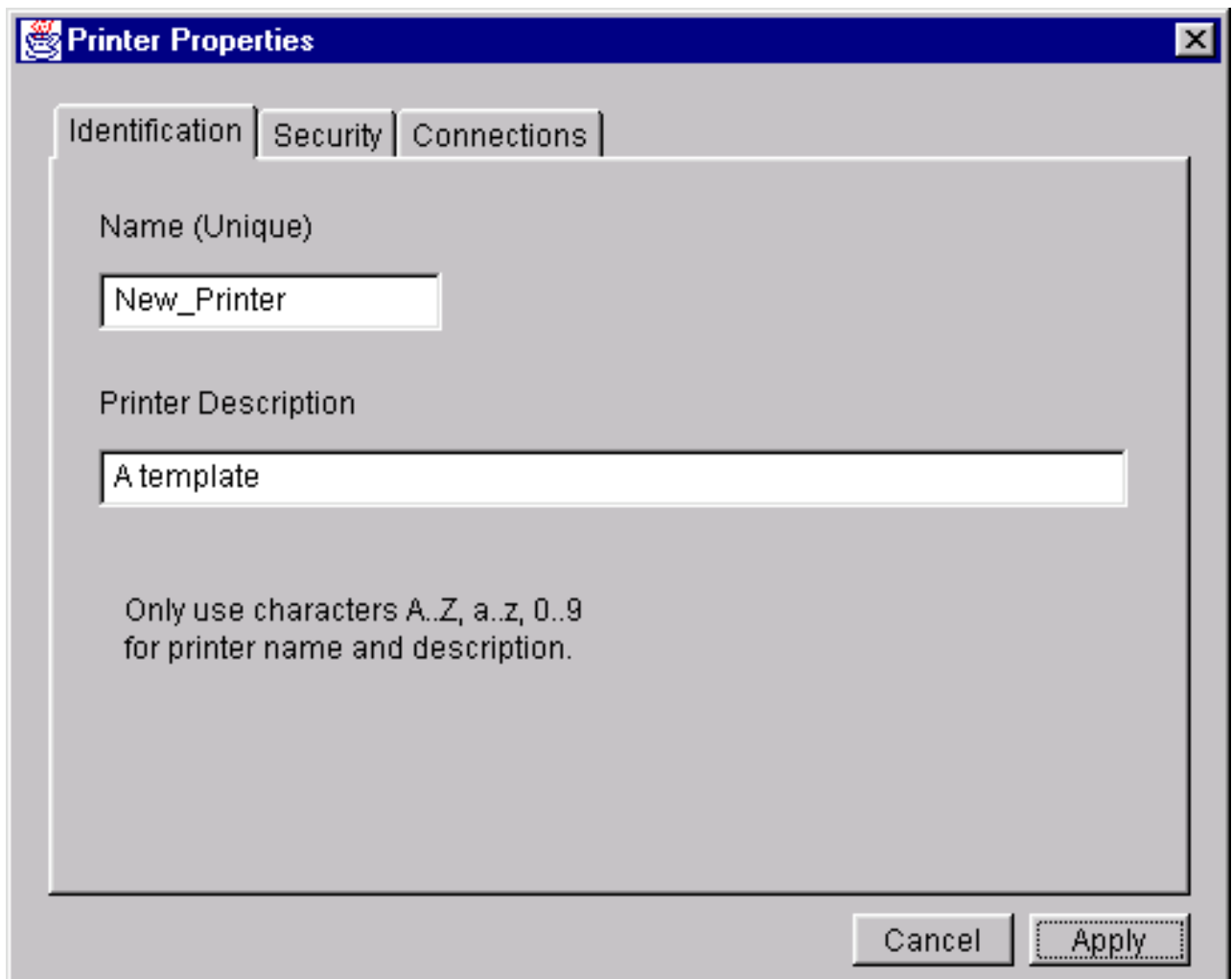


Figure 8. Printer Properties

The Printer Properties contains three tabbed windows, which are described below.

Identification Tab

Name (Unique)/Printer Description — Assigns a name to your printer, which identifies it in the Printer Database. You may also assign a longer description, which appears in parentheses to the right of the printer name in the database. In assigning a printer name, be sure to use only the alphanumeric characters A-Z, a-z and 0-9 (underscores and spaces may be used to separate words in your descriptions).

Security Tab

User/Supervisor Password — Enter the printer's password, if appropriate. The password feature is used to restrict access to certain functions of the printer manager. In User mode, the printer manager does not allow the following functions: files, configurations or configuration names to be downloaded to the printer, clearing the error log, and setting passwords. Supervisor mode allows unrestricted access to all functions of the printer manager. Passwords are only recognized up to 9 characters, and are displayed as *****, one * for each character typed. To set up a password, see [page 35](#).

Connections Tab

The connections screen contains two sub-tabs: The Access Method tab and the Network tab.

Access Method Tab

Access Method — Identifies how the printer manager accesses the printer. For the Administration Package, “LineJet” is the only option available. See the *LineJet Print Server User's Guide* for information on setting up the LineJet Print Server for your printer.

Download Mode — Identifies how the printer manager downloads files and configurations to the printer. For the Administration Package, “Access Method” is the only option available. All downloads will be made using the LineJet Print Server interface.

Download Timeout — Specify the amount of time, in minutes, the printer will wait for a response from the printer manager after sending a file to be downloaded from the host computer. If there is no response in the specified amount of time, the printer will time out and the download is terminated. If you have a slow connection between the printer manager and the printer, you may want to define a longer Download Timeout period. Define the Download Timeout between 1 and 60 minutes (1 minute is the default).

Network Tab

Enter the printer's IP Address and Port Number. (Click on the "Default" button to reset the Port Number to 3001.) The Time Out option sets the amount of time, in seconds, the printer manager will wait for a response from the printer after sending a command. If there is no response in the specified amount of time, an error message appears in the Status and Error Log window. If you have a slow connection between the printer manager and the printer, you may want to define a longer Time Out period. Define the Time Out between 5 and 300 seconds (15 seconds is the default).

NOTE:The Network settings must match the settings in the printer's front panel menu. See the "ETHERNET PARAMS" section in the *User's Guide*.

Toolbar

The printer manager toolbar contains a series of icons which serve as shortcuts to certain actions in the program. The function of these icons is shown in Figure 9. Refer to the specified page for a detailed description of each function.

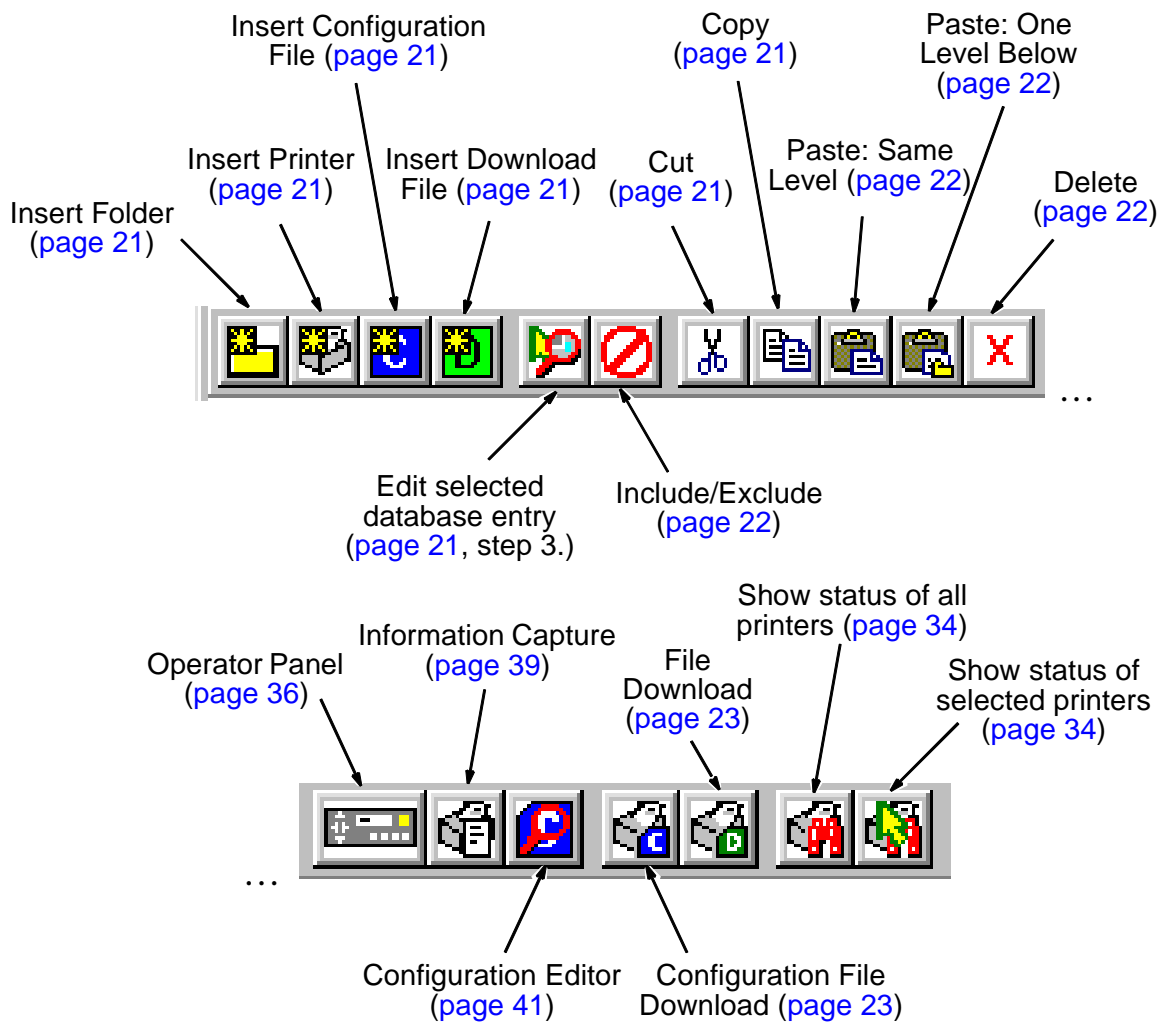


Figure 9. Toolbar


Managing the Database


You can organize your databases easily and effectively using the **Edit** option on the Printer Database menu bar. You may add, delete and assign printers, configuration files and download files to your database tree and keep them all organized using folders. All of the functions in the Edit Menu have shortcut keys on the toolbar (see [page 19](#)).

Database Items

 Printer. See “[Defining Printer Properties](#)” on [page 16](#).

 Folder. Use folders to group the elements of your database.

 Download file. A file stored on your host computer (i.e. software) which you can assign to be downloaded to the non-volatile memory of a printer or group of printers.

 Configuration file. A file created in the Configuration Editor (see [page 41](#)) which is stored on your host computer. A configuration file contains user-defined printer configurations which can be downloaded to your printer using either the Printer Database or the Configuration Editor.

The Edit Menu

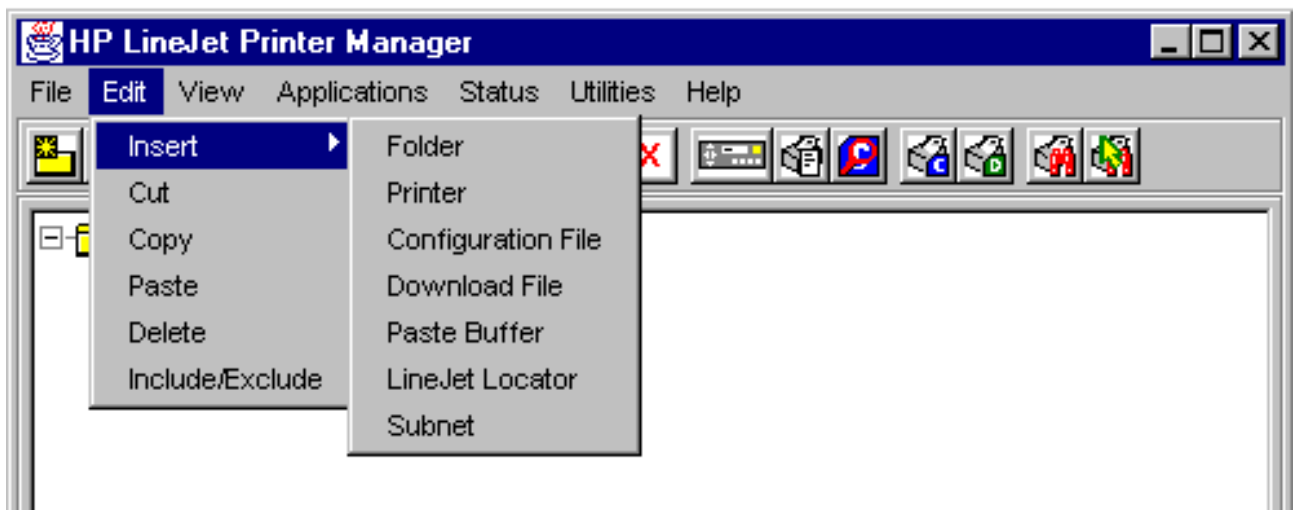


Figure 10. The Edit Menu

Use the **Edit** option on menu bar to build your database. The options in the **Edit** menu are described below.

Insert

Adds a folder, printer, configuration file, or download file into your database. An existing database item must be selected in order for a folder, printer, or file to be created. You may also paste the contents of the paste buffer (the last item which was copied or cut) into the database. The new icon will be placed one level below the selected database item. If there are already items below the selected database item, the new item will be placed at the end of the line.

The **Insert** menu is also used to create a LineJet Locator folder or a Subnet mask. For more information on these utilities, see [“Locating Printers on a Network” on page 28](#).

Inserting an item involves a three-step process:

1. Select a database item. The new icon will be created below the item you select.
2. Define which type of icon you wish to add by clicking **Edit** → **Insert** → and then selecting the item you are adding. This creates the new icon on the database.
3. Define what printer, folder or file this icon will represent.
 - a. To define a printer, see [“Defining Printer Properties” on page 16](#).
 - b. To define a folder, double-click on the “New Folder” icon you created in step 2. A dialog box will open. Type the name you want to give this folder and click **Apply**.
 - c. To define a configuration or download file, double-click on the “New Config File” or “New Download File” icon you created in step 2. A File dialog box will open. Find the appropriate configuration or download file, select it, and click **Open**. The database will display the name of the configuration or download file, as well as the file path.

Cut

Removes a selected folder, printer or file from the database and copies it to the paste buffer.

Copy

Copies a selected folder, printer or file from the database to the paste buffer, leaving the original intact.

NOTE:The printer manager will cut or copy only one database item at a time. If multiple database items are selected using the SHIFT key and then cut or copied, only the first selected database item will be copied to the paste buffer.

Paste

Places all items in the paste buffer back on the database tree. A database item must be selected in order to paste. The pasted item will be placed on the same level as the selected database item.

NOTE:If you use the **Edit** → **Paste** option, the pasted item will be placed on the *same level* as the selected database item. If you use the **Edit** → **Insert** → **Paste Buffer** option, the pasted item will be placed *one level below* the selected database item. Please note the difference.

Delete

Permanently removes a selected folder, printer or file from the database.

Include/Exclude

Places a selected folder, printer or file in an inactive state. Inactive database items are not affected by actions performed under the Applications menu, Status menu, or Utilities menu. Inactive database items will display a red circle with a slash through it on top of the item's icon.

To reactivate a database item, select the inactive item and click **Edit** → **Include/Exclude**.

Downloading Files

Once you have defined configuration and download files on your database, you must download them to your printer in order for them to affect the active print state. Use the Printer Database to download as many files to as many printers as you want.

NOTE: Each emulation used by the printer has its own list of valid flash files it can use. Refer to the appropriate *Technical Reference Manual* for details about valid flash files.

To download a **C** file which is on the same level or one level lower than the target printer on your database tree, select the printer which will receive the download and click **Applications** → **Configuration Download**. To download a **D** file which is on the same level or one level lower than the target printer on your database tree, select the printer which will receive the download and click **Applications** → **File Download**.

Once you have chosen your downloading option, a dialog window opens which shows all the files being downloaded to each printer. Confirm that the correct files are being sent to the appropriate printers. Click **Upgrade** to begin the download. Click **Cancel** to cancel the download and start over.

You may also download a series of files to several printers at once using folders. By selecting a folder and choosing either **Applications** → **Configuration Download** or **Applications** → **File Download**, all of the appropriate files inside that folder will be downloaded to all of the printers inside that folder.

NOTE: Downloading a configuration does not immediately update the printer's active configuration. A downloaded configuration must be activated using the "Load Config." setting in the printer's operator panel. See your printer's *User's Guide* for details.

See [page 24](#) for examples of using the Printer Database to download files.

Downloading Files Examples

Figure 11 shows a sample database.

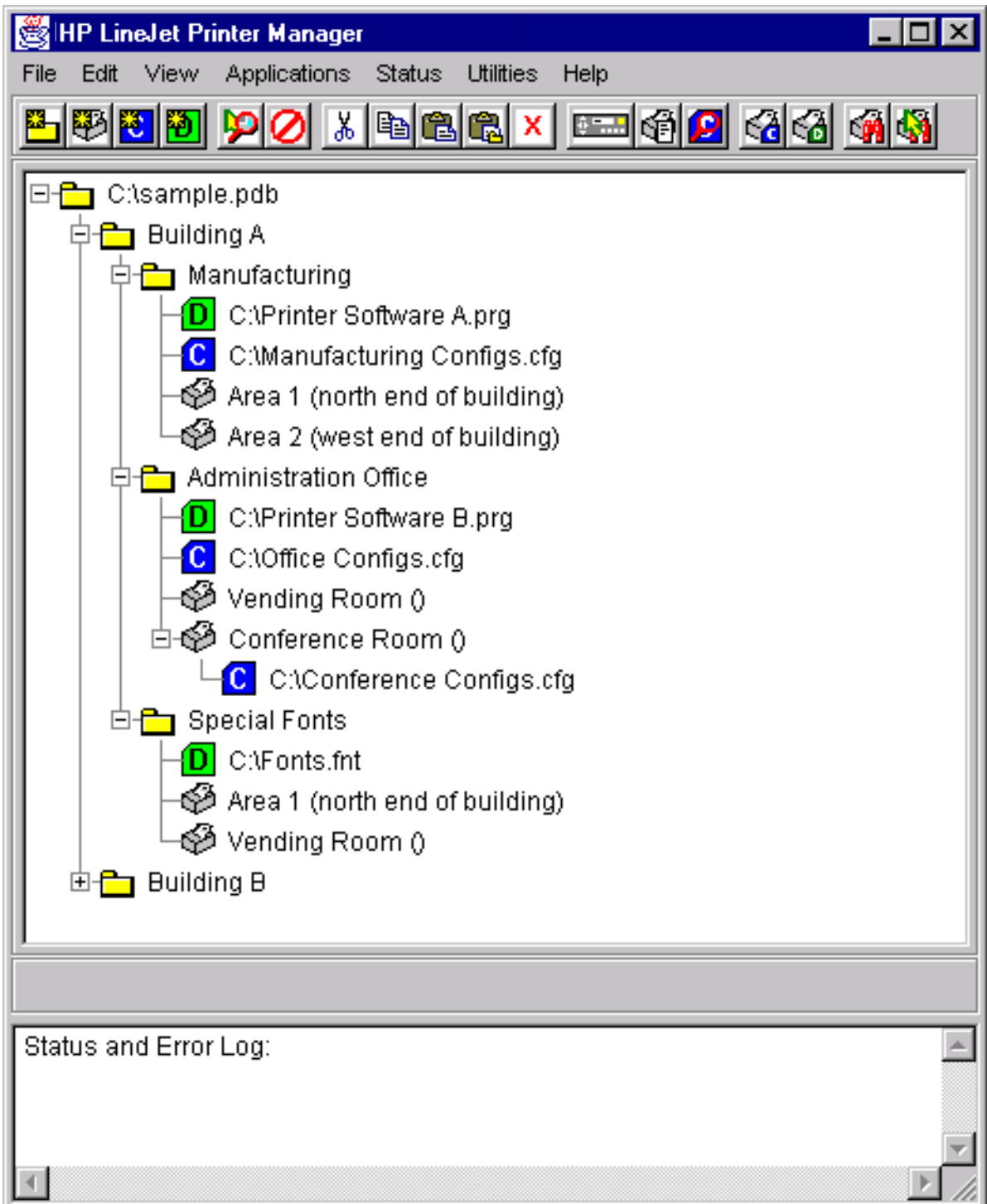
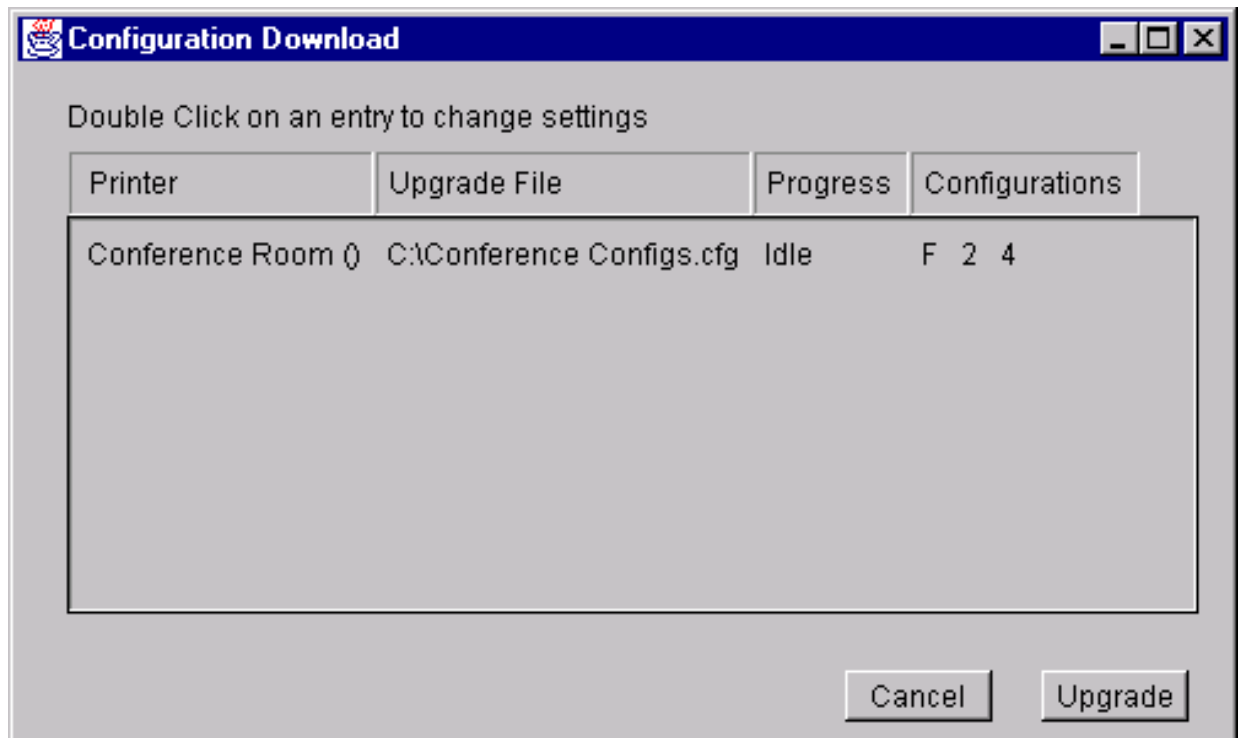


Figure 11. Sample Database

In the sample database, the printers are organized into Buildings A and B. Inside the Building A folder, the printers in the Manufacturing and Administration areas have been separated into sub-folders and given their own download and configuration files. The Conference Room printer also has its own configuration file. Two of the printers from Building A require special fonts, so those printers have been duplicated in the Special Fonts folder, along with the file which contains those fonts. The Building B printers are not listed because that folder is collapsed.

Example 1

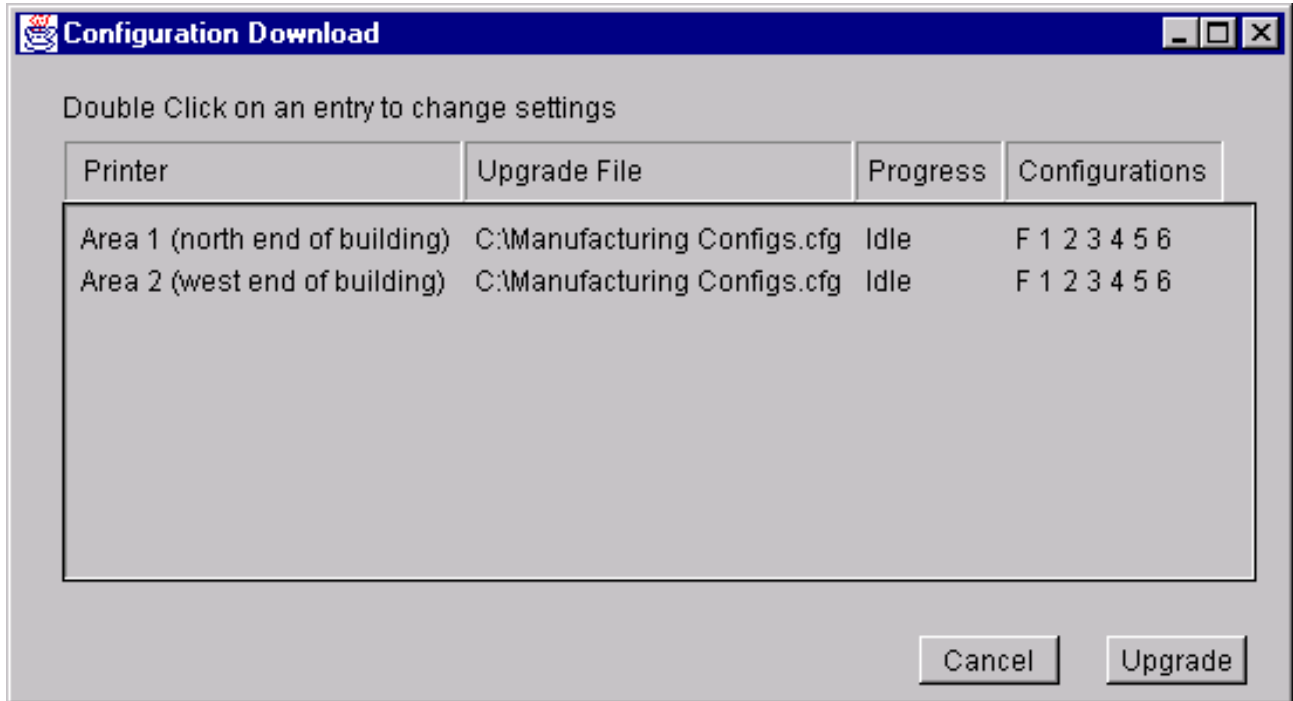
The user of the sample database selects the Conference Room printer, then clicks **Applications** → **Configuration Download**. The following dialog box appears:



The dialog box displays the printer receiving the file, the name of the file being sent, the progress of the download, and the configurations contained within the file. According to the dialog box, the `Conference Configs.cfg` file contains a factory configuration as well as two user-defined configurations. When the user clicks on **Upgrade**, the `Conference Configs.cfg` file is sent to the Conference Room printer. The dialog box indicates the progress of the file as it downloads.

Example 2

The user of the sample database selects the Manufacturing folder, then clicks **Applications** → **Configuration Download**. The following dialog box appears:



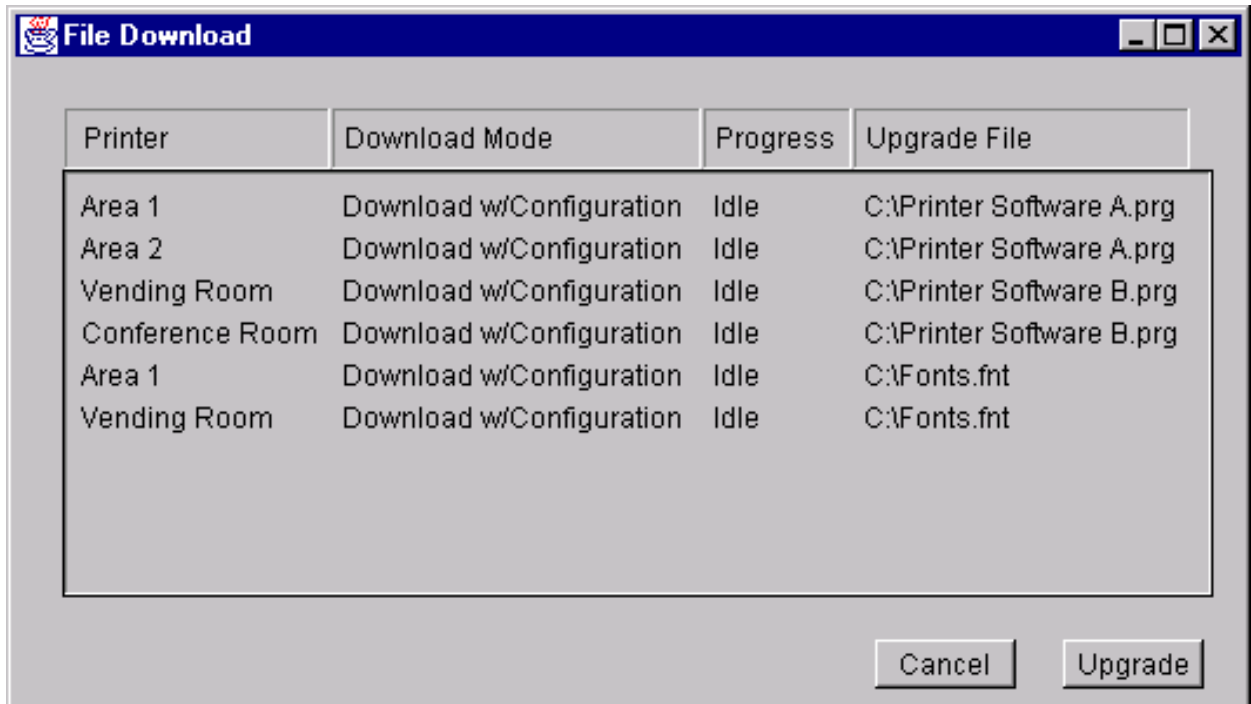
The printer manager will send all configuration files inside the Manufacturing folder to all printers inside the Manufacturing folder. According to the dialog box, when the user clicks on **Upgrade**, the `Manufacturing Configs.cfg` file will be sent to printers Area 1 and Area 2.

You may also specify which configurations within the file you wish to download. Double-click on the name of the printer you want to make adjustments to, and a dialog box appears which allows you to select or deselect specific configurations. Only the selected configurations will be downloaded.

Notice that the software file inside the Manufacturing folder, `Printer Software A.prg`, is not on the download list. The printer manager downloads configuration files and download files separately. If the user also wanted to download the `Printer Software A.prg` file to these printers, they would select the Manufacturing folder, then click **Applications** → **File Download**.

Example 3

The user of the sample database selects the Building A folder, then clicks **Applications** → **File Download**. The following dialog box appears:



Selecting a folder not only downloads files from that folder, but all of its sub-folders as well. According to the dialog box, once the user clicks on **Upgrade**, the `Printer Software A.prg` file will be sent to printers Area 1 and Area 2; the `Printer Software B.prg` file will be sent to the Vending Room and Conference Room printers; and the `Fonts.fnt` file will be sent to the Area 1 and Vending Room printers.

The options in the Download Mode column may be changed. Double-click on the printer you wish to change to toggle through the following options:

Download w/Configuration — When the firmware file is downloaded, the configurations currently saved in non-volatile memory are preserved.

Download — When the firmware file is downloaded, all the configurations are reset to their original, factory settings.

Skip — As the printer manager moves through the Download queue, any files marked “Skip” are not downloaded.

Locating Printers on a Network

The printer manager includes a utility which polls all the printers on your network and returns information about those printers to the printer manager database screen. You may also set up Subnet Masks to limit the number of printers the printer manager searches for. This is a quick and effective way to set up your database with all the appropriate information you need about the printers on your network.

Before searching for printers, you must set up the search structure. Click on **Edit** → **Insert** → **LineJet Locator**. This creates a folder called “LineJet Locator”, which is the engine that searches for the printers on the network. Underneath the “LineJet Locator” folder, another folder is created called “Network Topology”. This is the default name; to change the name of this folder, double-click on it. Inside the “Network Topology” folder, a default Subnet is created, which has the network I.D., network mask and gateway information displayed right in the database.

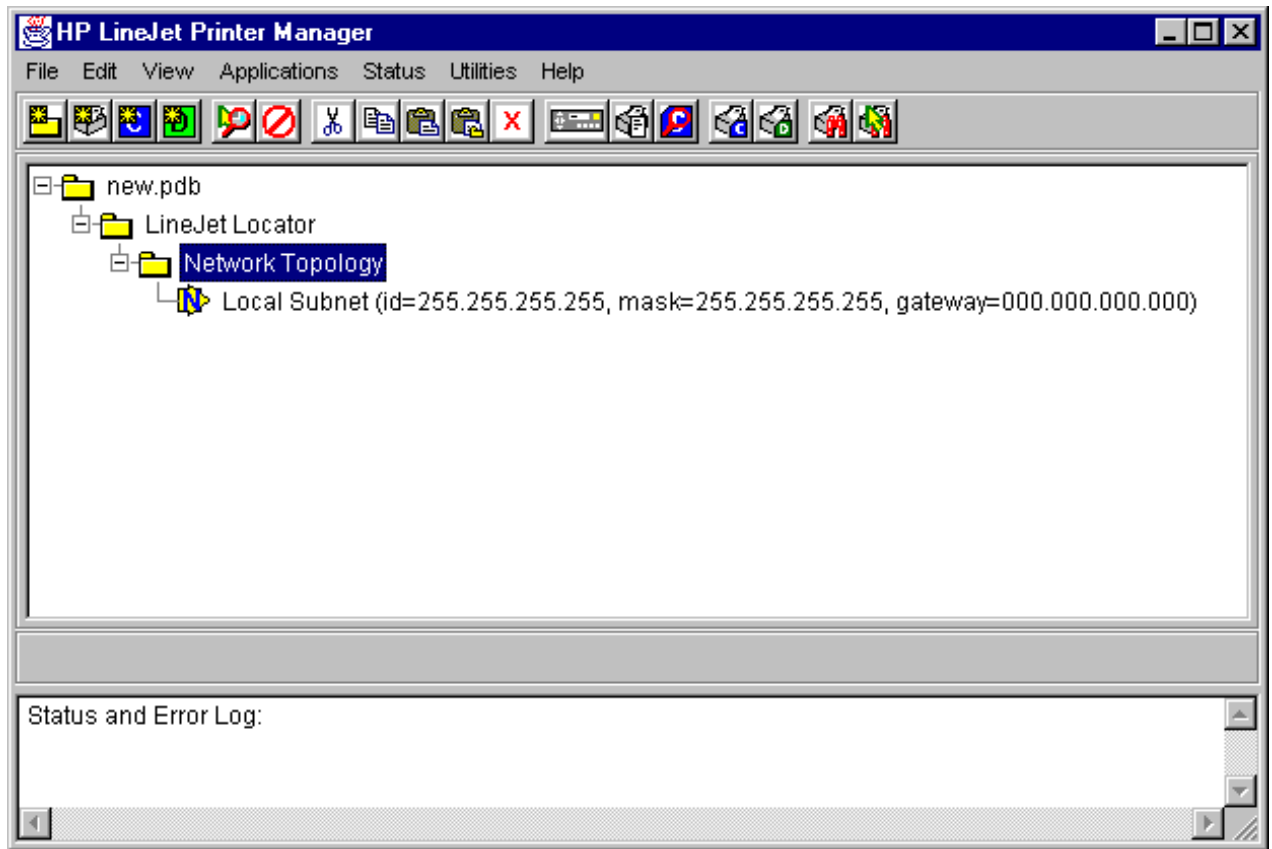


Figure 12. Inserting a LineJet Locator

To change the information in the Local Subnet, double-click on it. You are able to change the Subnet Name, Network I.D., Network Mask and Gateway information.

You may also place additional Subnets inside the database. Click on the folder or database item you wish to place the subnet underneath, then click on **Insert** → **Subnet**.

Once you have set up the appropriate Subnet information, you are ready to search for printers. Click on **Utilities** → **Search for LineJet Printers**. All the printers under the Subnet you set up will appear in the database in a “Located LineJet Printers” folder located underneath the “LineJet Locator” folder.

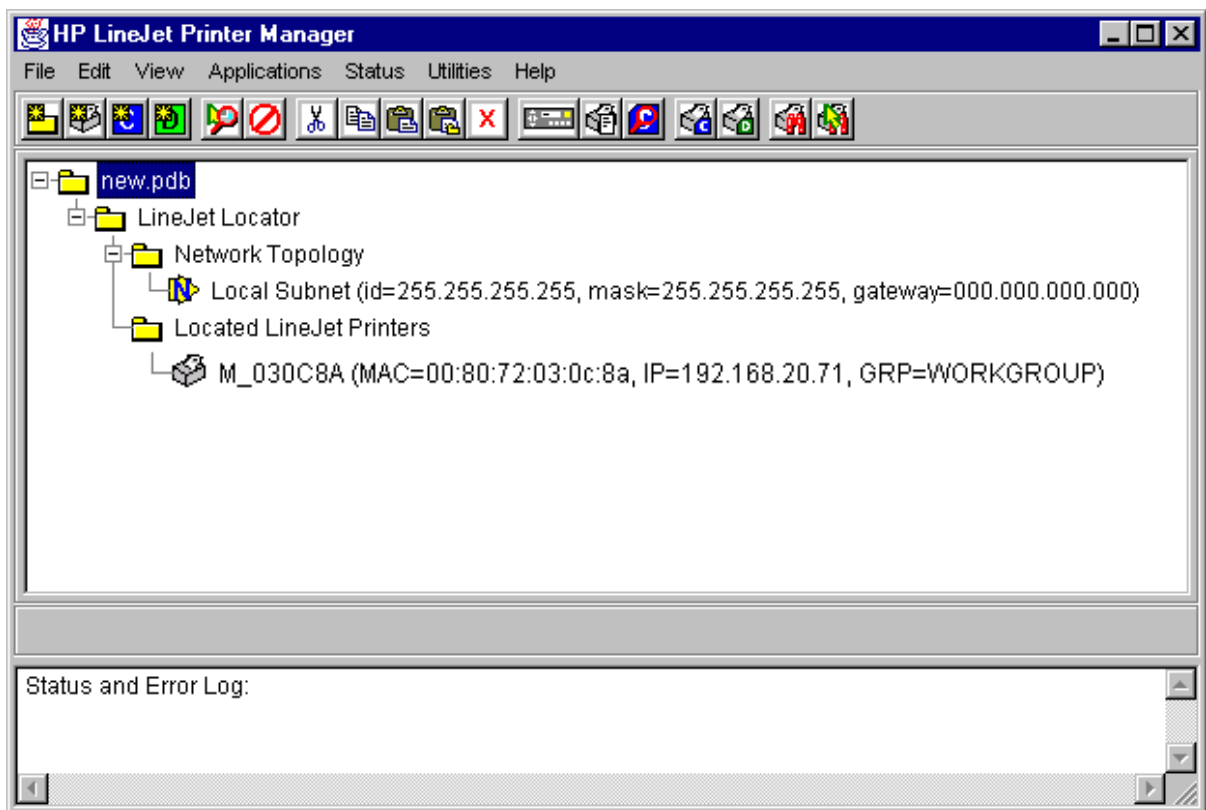


Figure 13. Printer Search Results

The database shows the name, MAC address, IP Address and group name of each printer found. Double-click on the printer icon to change the Printer Properties (see [“Defining Printer Properties”](#) on page 16).

Printer Database Menu Bar

The Printer Database menu bar is located at the top of the main window (see [page 14](#)). Use the menu bar to access all the functions of the printer manager.

The following are descriptions of each of the options located in the menu bar.

File

New — Creates a new database file. The printer manager only allows one database file to be open at a time. The printer manager will ask if you want to save your changes to the current database before creating a new one.

Open — Opens a database file. The printer manager only allows one database file to be open at a time. The printer manager will ask if you want to save your changes to the current database before opening a different one.

Save — Saves the active database file under its current name.

Save As — Prompts the user to enter a name for the current database file before saving. Use Save As if you do not wish to overwrite the current database file.

Preferences — Opens the Preferences dialog box. (See [Figure 14.](#))

Exit — Exits the printer manager.

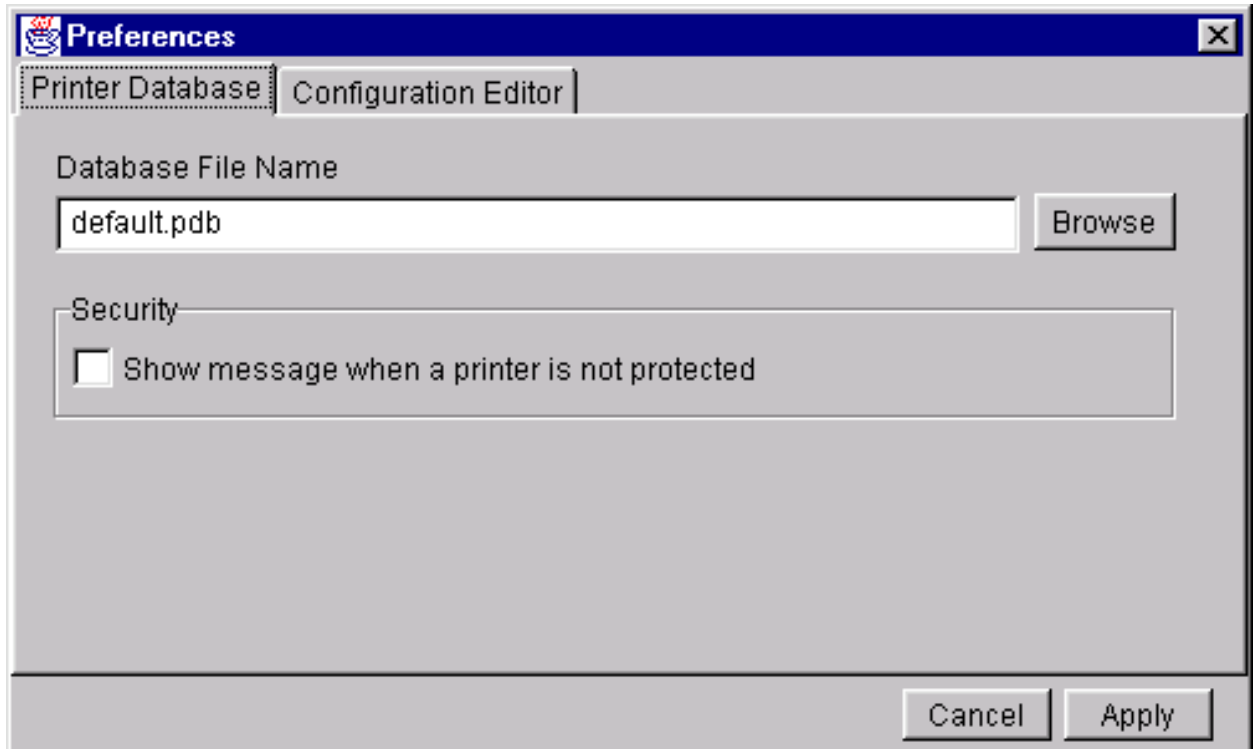


Figure 14. Preferences (Printer Database tab)

The Preferences dialog box has two tabs.

The **Printer Database** tab controls database features.

- **Database File Name** — Enter the name of the default database file. This is the database file the printer manager opens when the program starts. To select a new default database file, type it into the Database File Name box, or click on “Browse” to find a file on your network.
- **Show message when a printer is not protected.** — Check this box to enable a warning message which informs the user when a selected printer does not have an assigned password.

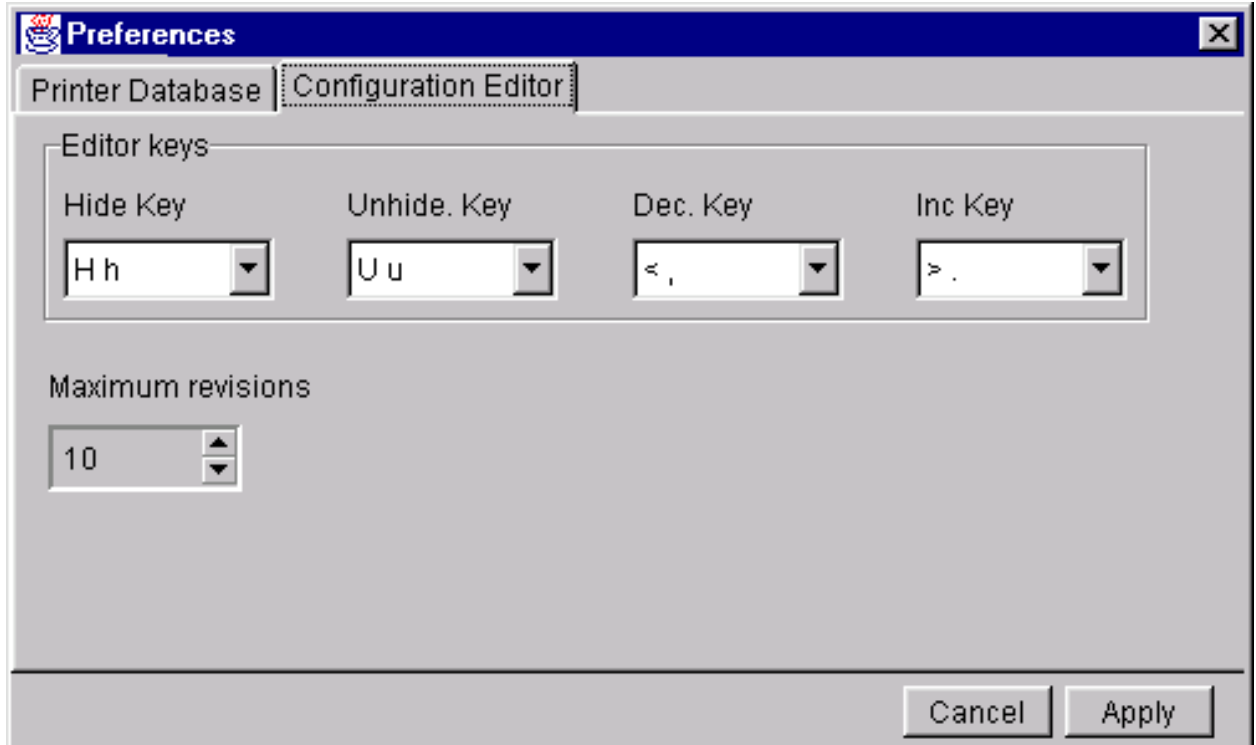


Figure 15. Preferences (Configuration Editor tab)

The **Configuration Editor** tab controls features of the Configuration Editor utility.

- **Hide Key/Unhide Key** — Assigns which keys will hide and unhide menu items in the Configuration Editor menu tree (see [page 45](#)). The default for Hide is “H h”. The default for Unhide is “U u”.
- **Dec./Inc. Key** — Assigns which keys will decrement and increment menu items in the Configuration Editor menu tree (see [page 43](#)). The default for decrement is “< ,”. The default for increment is “> .”.
- **Max Revs.** — Set the maximum allowed number of reverted Configuration Editor sessions to be saved by the printer manager. For detailed information on the Revert feature, see [page 48](#). The Max Revs. setting ranges from 1-20. The default setting is 10.

Edit

For a detailed explanation of the **Edit** menu, see [page 20](#).

View

Top Level — Collapses all folders on the database menu tree.

Expand All — Expands all folders and printers on the database menu tree.

Applications

For a detailed explanation of the **Applications** menu options, find the menu option you are looking for in [Table 1](#) and go to the referring page.

Table 1. Applications Menu options

Menu Option	Page #
Operator Panel	page 36
Information Capture	page 39
Configuration Editor	page 41
Configuration Download	page 23
File Download	page 23
Barcode Verification	page 48

Status

The Status Window is shown in [Figure 16](#).

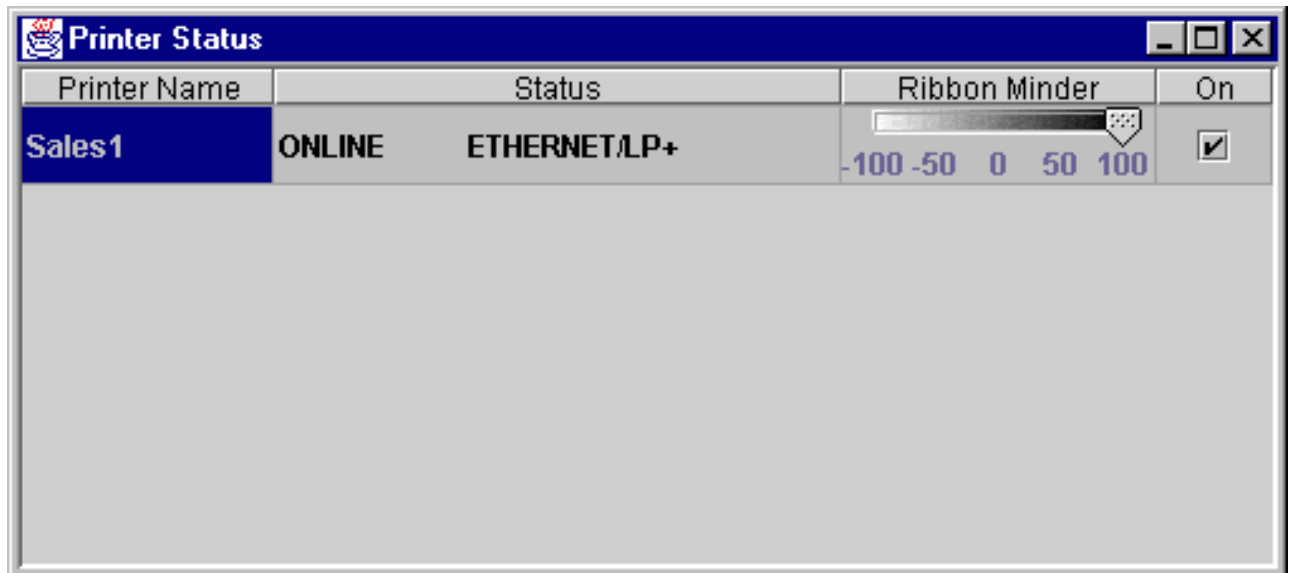


Figure 16. Status Window

Selecting any of the options in the **Status** menu brings up the Status window shown in [Figure 16](#). The Status window displays the current status of the printer(s) you choose. Clicking **Status** → **Selected Printers** displays the printers currently selected in the Printer Database menu tree. Clicking **Status** → **All Printers** displays the status of all printers in the Printer Database menu tree.

Printers marked as inactive will not appear in the Status window.

In addition to printer status, this window allows you to turn the RibbonMinder™ gauge on and off by checking or unchecking the box next to the gauge for that printer. RibbonMinder is a feature which shows you when a ribbon should be changed by monitoring ribbon consumption and alerting you when the print quality falls below a level you designate. For more information about RibbonMinder, see your printer *User's Guide*.

Utilities

Reboot Printer — Reboots the selected printer.

Set Printer Password — The supervisor password must be entered in the Printer Properties (see [page 16](#)) before the program will allow any passwords to be changed.

A dialog box appears, requesting a new password. Type in the new password and click **Set**. To delete a password, type in the current password and click **Delete**.

Search for LineJet Printers — Searches the network for printers currently connected with the LineJet Print Server interface. See [“Locating Printers on a Network” on page 28](#) for a detailed description of this utility.

Help

About — Displays the splash window seen when the printer manager was started.

3

Applications

Operator Panel

The printer manager includes a virtual operator panel which simulates all the functions of the actual operator panel on your printer. [Figure 17](#) shows the virtual operator panel.

To access the operator panel, select the appropriate printer from the Printer Database and click **Applications** → **Operator Panel**.

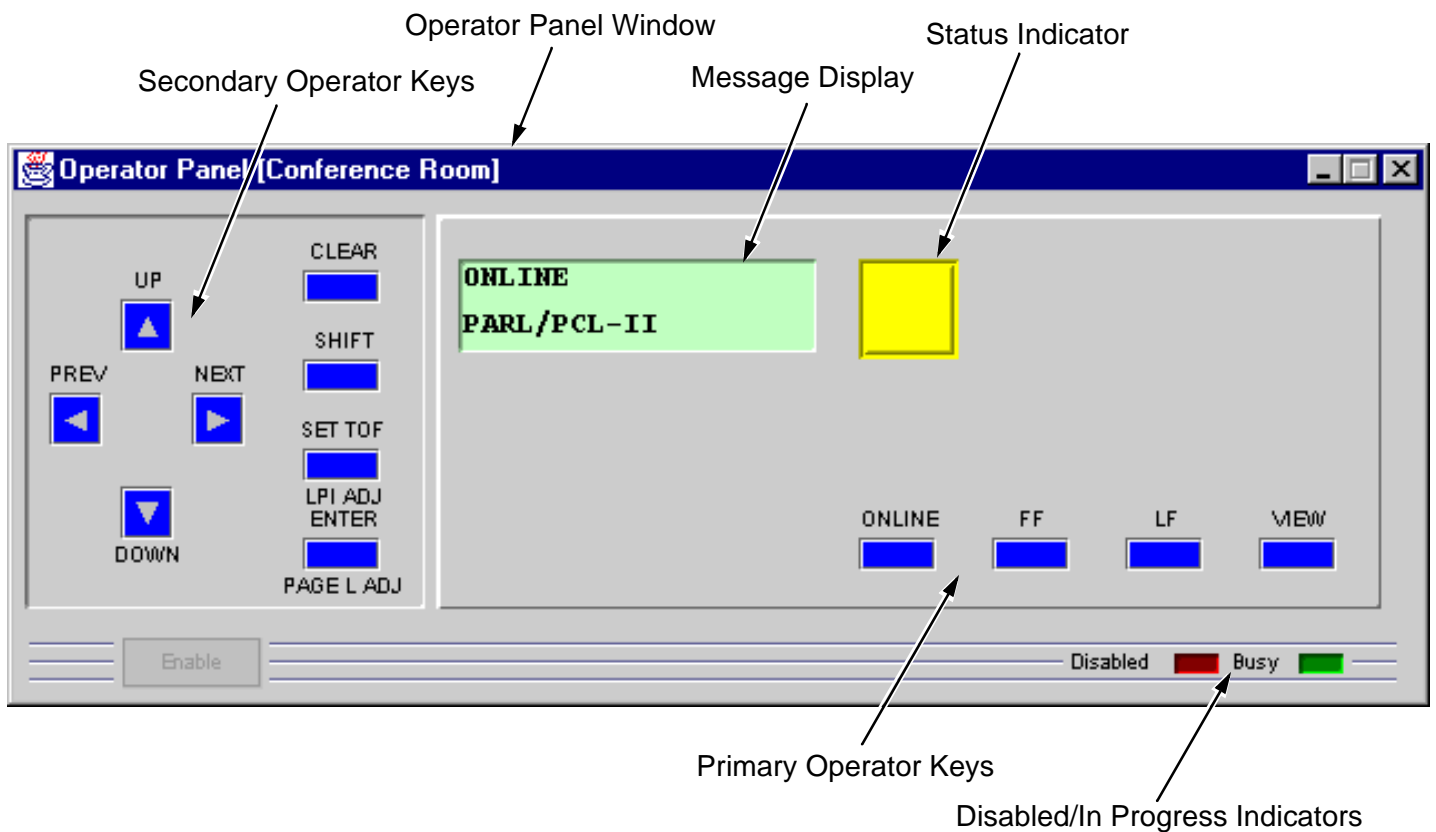


Figure 17. Operator Panel

Primary/Secondary Operator Keys

Clicking on the primary and secondary operator keys in the virtual operator panel causes the printer to perform the same actions as if you were physically pressing the keys on the actual operator panel. For example, when the printer is on line, clicking on the **ON LINE** key takes the printer offline. Clicking on the **ON LINE** key again places the printer back on line.

Some functions require pressing multiple keys at the same time. You can do this with the virtual operator panel by holding down the SHIFT key on your computer keyboard as you select each key. When you release the SHIFT key, the selected keys on the operator panel activate as if they were pressed simultaneously. For example, unlocking the **ENTER** key on your printer requires that you press **UP** and **DOWN** at the same time. To do this with the virtual operator panel, hold down the SHIFT key on your keyboard, then select **UP** and **DOWN** with your mouse. Release the SHIFT key, and the **ENTER** key is unlocked.

Some functions require pressing keys for differing periods of time. For example, in offline mode, pressing and releasing the **LF** key quickly on the printer's operator panel performs a line feed; pressing and holding the **LF** key for more than a second advances the paper continuously. The same is true for the virtual operator panel. If you click and release on the **LF** key quickly with your mouse, the printer performs a line feed. If you click and hold the key down with your mouse for longer than a second, the **LF** key turns a different color and advances the paper until you release the key.

NOTE:For a detailed explanation of the functions of each primary and secondary operator key, see your *Quick Reference Guide*.

Message Display

The message display shows what is currently displayed on the printer's LCD. Use the message display to configure menu options and read fault messages.

Status Indicator

The status indicator displays the printer's current operating mode:

Online mode — The indicator lights up.

Offline mode — The indicator is greyed out.

Fault mode — The indicator flashes.

Disabled Indicator

Normally, when you are using the printer via the virtual operator's panel, the "Disabled" light is off, and the "Enable" button underneath the status indicator is grayed out. While the printer manager has control of the printer, the message "CAUTION PPM HAS REMOTE CONTROL" appears on the actual printer's LCD display to alert any other users that the printer is currently being used remotely.

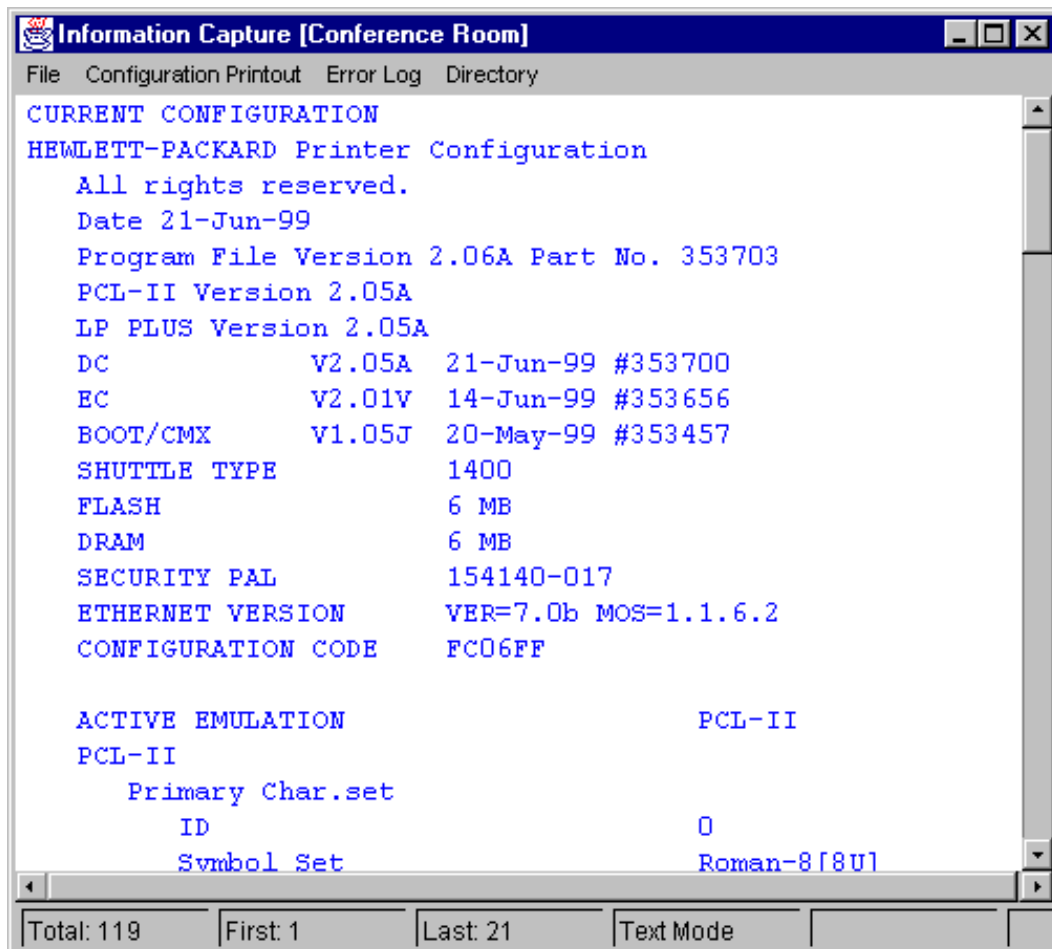
However, if another user physically presses any key on the actual printer, this command overrides the virtual operator panel and disables it. The "Disabled" indicator lights up, and the "Enable" button becomes active. Pressing the "Enable" button gives control of the printer back to the virtual operator panel.

In Progress Indicator

This light flashes when the printer is working on a job or moving paper.

Information Capture

To access the Information Capture application, select the appropriate printer from the Printer Database and click **Applications** → **Information Capture**.



The screenshot shows a window titled "Information Capture [Conference Room]". The window contains a text-based interface with a menu bar (File, Configuration Printout, Error Log, Directory) and a main display area. The display area shows the following configuration details:

```

CURRENT CONFIGURATION
HEWLETT-PACKARD Printer Configuration
  All rights reserved.
  Date 21-Jun-99
  Program File Version 2.06A Part No. 353703
  PCL-II Version 2.05A
  LP PLUS Version 2.05A
  DC          V2.05A  21-Jun-99 #353700
  EC          V2.01V  14-Jun-99 #353656
  BOOT/CMX   V1.05J  20-May-99 #353457
  SHUTTLE TYPE      1400
  FLASH           6 MB
  DRAM            6 MB
  SECURITY PAL     154140-017
  ETHERNET VERSION VER=7.0b MOS=1.1.6.2
  CONFIGURATION CODE FC06FF

ACTIVE EMULATION      PCL-II
PCL-II
  Primary Char.set
    ID                0
    Symbol Set        Roman-8[8U]
  
```

At the bottom of the window, there is a status bar with the following information:

Total: 119	First: 1	Last: 21	Text Mode
------------	----------	----------	-----------

Figure 18. Information Capture

The Information Capture application allows you to view any of the configurations or error logs saved in the printer's non-volatile memory and save them as a text file to your local hard drive.

Loading a configuration into the Information Capture will NOT change the active configuration — this is a *view only* application. If you wish to make any changes to your configurations, use the Configuration Editor (see [page 41](#)).

The display at the bottom of the Information Capture window shows the total number of text lines in the current capture, as well as which complete text line in the capture appears at the top of the window (First) and at the bottom of the window (Last).

The following are descriptions of the Information Capture menus.

File

Save As — Saves the configuration or error log currently displayed in the Information Capture window as a `.log` file on your local hard drive. This `.log` file can then be opened in any word processing program.

Clear Window — Clears the Information Capture window of any displayed configurations or error logs.

Close — Closes the Information Capture window.

Configuration Printout

Current/Factory/Power-Up/All/1-8 — Choose which configuration you wish to view. If you choose more than one configuration without clearing the window, each additional configuration is added to the end of the display.

Error Log

All Errors — Displays the printer's current error log.

Clear — Clears the printer's non-volatile memory of all errors.

NOTE:The printer's error log and the Status and Error Log seen at the bottom of the main printer database window of the printer manager are separate. Clearing the printer's error log does *not* clear the Status and Error Log.

Directory

Flash File System — Displays the file system information for your printer.

Configuration Editor

To access the Configuration Editor application, select the appropriate printer from the Printer Database and click **Applications** → **Configuration Editor**. The active configuration is uploaded from the printer and displayed in the Configuration Editor window. (See [Figure 19](#).)

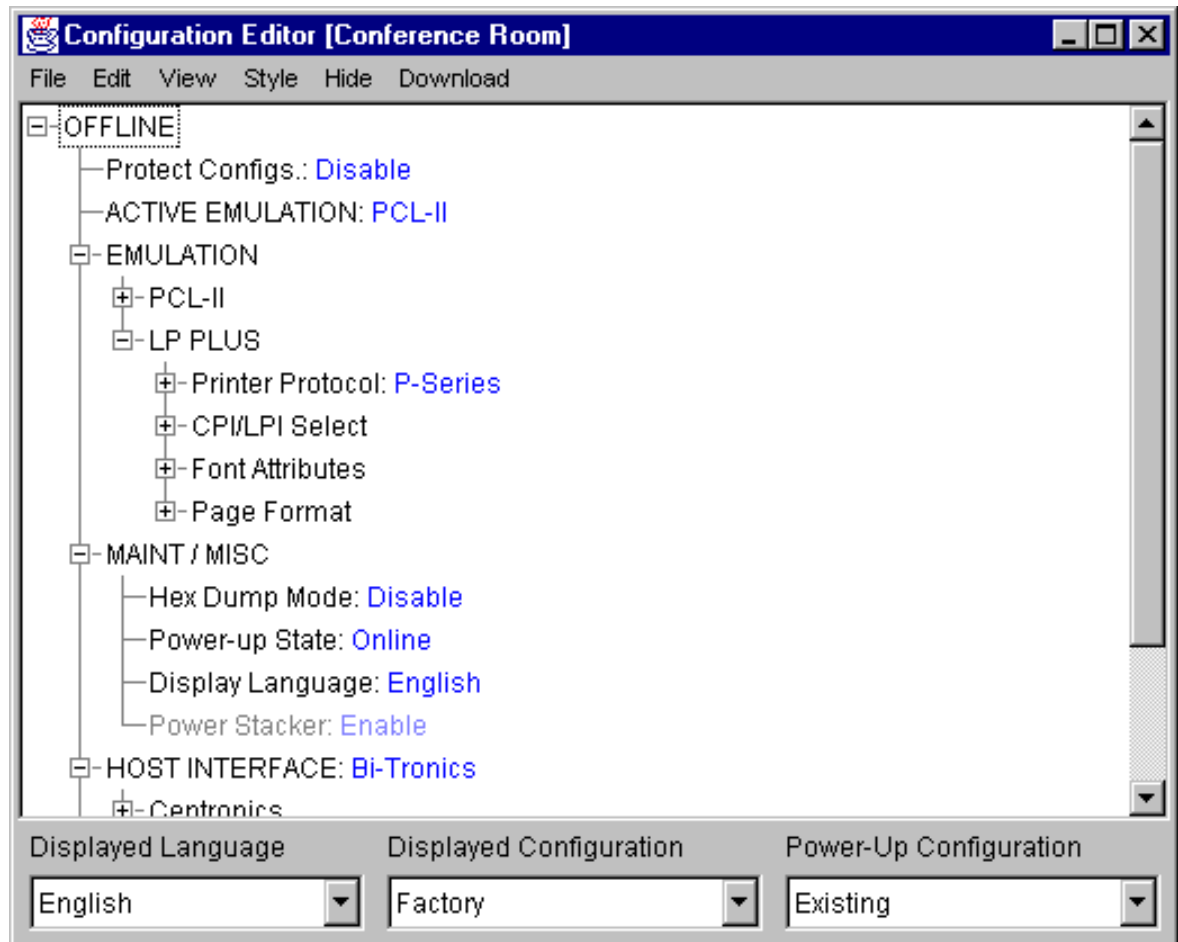


Figure 19. Configuration Editor

The Configuration Editor allows you to upload, modify and download eight user-defined configurations and the factory default configuration (if modification of the factory configuration has been enabled; see the Note on [page 43](#)). You may also save sets of configurations to your local hard drive so they can be easily downloaded to the printer at any time.

The Configuration Editor does not effect the current configuration or the active printer status until the configurations are downloaded to the printer.

Menu Tree

The Configuration Editor displays the printer configurations in a tree format (see [Figure 19](#)). The top level of the tree is the OFFLINE menu. From that level, the tree branches into the printer's submenus. Menu items which have a box with a plus (+) or minus (-) sign next to them have further submenus below them. Click on the plus sign to expand the submenus below. Click on the minus sign to collapse the submenus. (You may also use the **Expand Tree/Collapse Tree** options in the **View** menu to expand or collapse submenus.)

There are three pull-down menus at the bottom of the Configuration Editor. The **Displayed Language** option allows you to select from five different languages in which to display the configuration information. The **Displayed Configuration** option lets you easily choose between the available configurations to display. The **Power-Up Configuration** allows you to assign which configuration will be loaded whenever the printer is turned on.

Creating Configurations

Along with the factory configuration, your printer allows up to 8 user-defined configurations which can be downloaded to your printer's non-volatile memory. You may create configurations using the printer's operator panel, or by using the Configuration Editor.

To create a configuration using the Configuration Editor:

1. Click **Edit** → **Copy From:**. A list of configurations appears. Undefined configurations will appear grey. Choose one of the existing configurations.
2. Click **Edit**. (Notice that the configuration you chose in step 1 now appears next to the **Copy From:** menu item.) Move your mouse down to **Copy To**. A list of configurations appears. Choose the number of the configuration you wish to create. This new configuration will be created with the settings from the configuration you chose in step 1.

NOTE: If you choose to **Copy To** a configuration which already exists, that configuration will be overwritten.

3. You may now edit the configuration settings. See the next section, “Changing Configurations”.

Changing Configurations

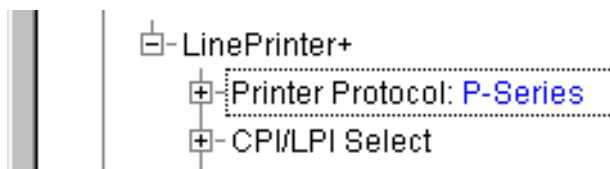
There are two ways of changing configuration settings in the Configuration Editor:

- making the changes directly on the menu tree
- using the Menu Editor

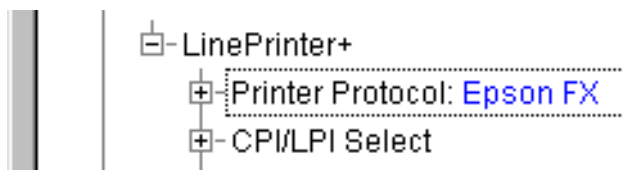
NOTE: Normally, the factory default configuration cannot be changed. However, you may enable modification of the factory configuration by selecting **Edit** → **Enable Factory Edit**. It is strongly recommended that you do *not* modify the factory default configuration. To disable modification of the factory configuration, select **Edit** → **Disable Factory Edit**.

Making Changes on Menu Tree

1. Using the “Displayed Configuration” menu at the bottom of the window, use the pull-down arrow to choose the configuration to be changed.
2. Expand the submenus until the configuration setting you wish to change is displayed.
3. Select the menu item you wish to change. A selection box surrounds your choice.



4. Use the < and > keys to toggle through the available options. (You may change these keys in the **File** → **Preferences** screen of the Printer Database window. See [page 31](#).)



Menu Editor

Double-clicking on any menu item brings up the Menu Editor window. In [Figure 20](#), below, the user has double-clicked on the Printer Protocol option.

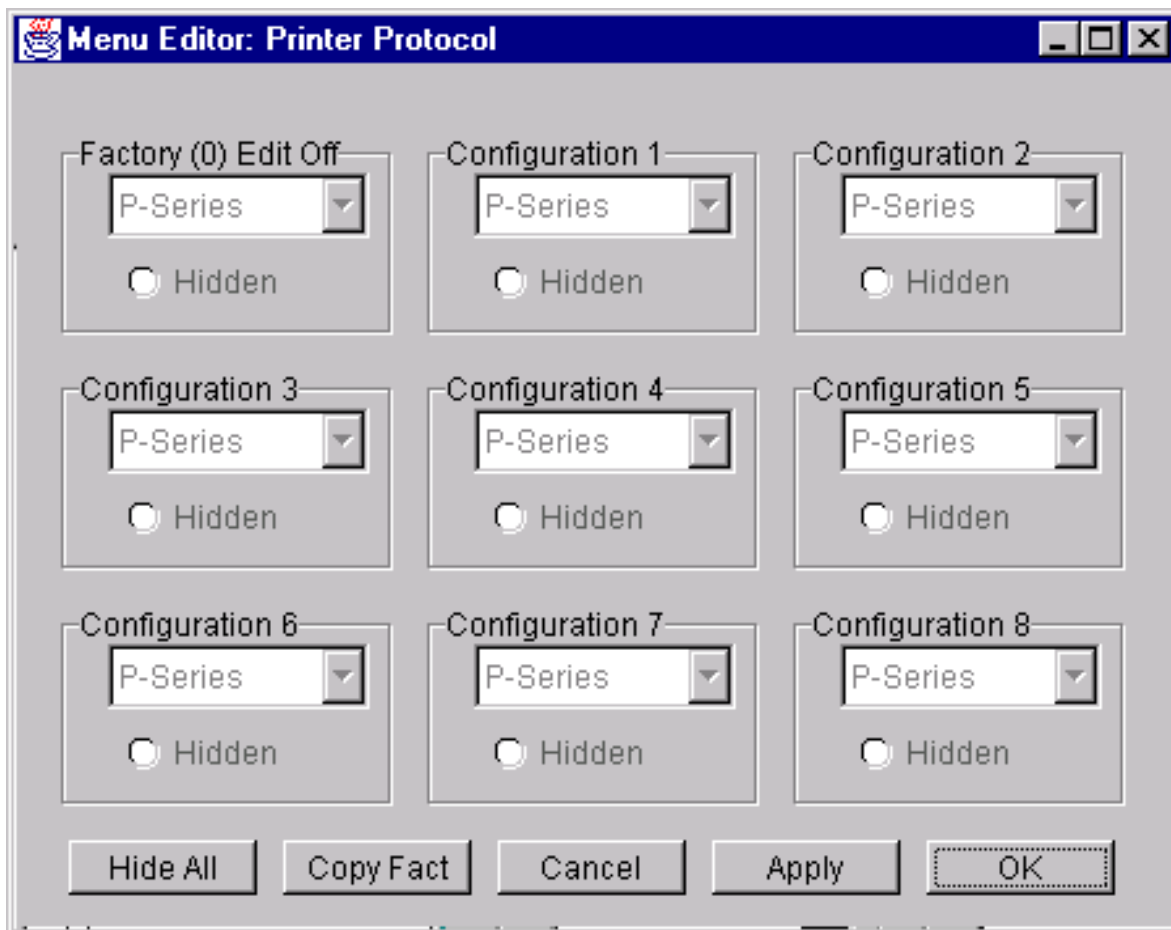


Figure 20. Menu Editor (Line Matrix)

By using the Menu Editor, you may view and adjust the settings of all nine of the printer configurations at the same time. To change any setting, click on the pull-down arrow underneath the appropriate configuration and choose the option you want. If a configuration does not exist yet, its name and settings are grayed out; you must create the configuration before you can edit it (see [page 42](#)).

Select the **Hidden** button under any configuration to hide this menu item in the operator panel. Select the **Hide All** button to hide this menu item in all configurations. (For more information on hiding, see [page 45](#).)

Select **Copy (Fact, #1-8)** to set all configurations to the same value as the factory or user-defined configuration currently selected under the **Edit → Copy From:** menu in the Configuration Editor (see [page 42](#)).

Select **Cancel** to exit the Menu Editor without saving your changes.

Select **Apply** to save your changes without exiting the Menu Editor.

Select **OK** to save your changes and exit the Menu Editor.

Deleting Configurations

To delete any of the configurations (except the Factory Config.), select **Edit → Delete →** and choose the number of the configuration to be deleted.

Naming Configurations

You may give a 15-character alpha-numeric name to any of the 8 user-defined configurations. Click **Edit → Names** to bring up the Edit Configuration Names window.

Choose the configuration you want to name, then click **Apply** to assign the names you have changed, **Cancel** to exit this window without saving your changes, or **Reset** to restore the original configuration numbers.

Hiding/Unhiding Menu Items

In order to reduce the complexity of the operator panel menus, or allow printer operators to change only certain printer configuration menu items, the Configuration Editor gives you the option of hiding menus. If you choose to hide a menu item in the Configuration Editor, that menu item will still affect the printer when the configuration is downloaded to it, but it will not appear on the printer's front panel.

The Configuration Editor displays hidden menus in gray on the menu tree. When a menu item is hidden, all of its sub-menus are hidden as well. In [Figure 21](#), the Printer Protocol menu item has been hidden. The Printer Protocol menu item, as well as its sub-menus (P-Series, P-Series XQ, etc.) will be unavailable to anyone attempting to change this configuration on the printer's operator panel.

Hidden menu items may still be changed using the Menu Editor.

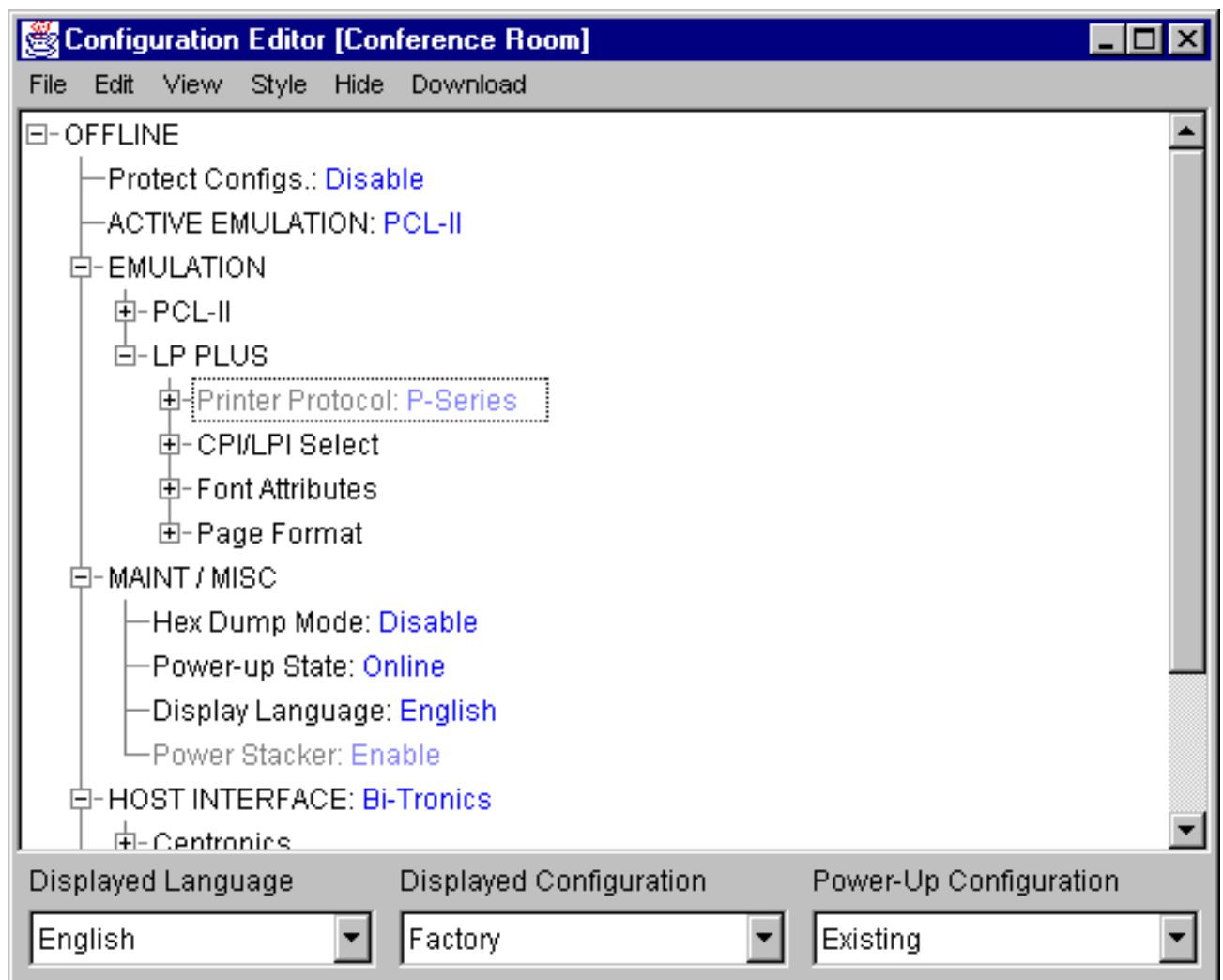


Figure 21. Hidden Menu Items

There are three methods for hiding or unhiding menu items:

1. Using the keyboard. From the menu tree, select the appropriate menu item. A selection box appears around the selected menu item. Press the **H** key to hide the menu item or the **U** key to unhide the menu item. (You may change these keys in the **File** → **Preferences** screen of the Printer Database window. See [page 31](#).)
2. Using the Menu Editor. See [page 45](#).
3. Using the **Hide** option on the Configuration Editor menu bar. Using this menu option, you may hide or unhide individual items, sub-menus or the entire configuration.

Saving Configuration Files

Normally, your printer is limited to the nine configurations it saves in its non-volatile memory. Any changes to these configurations would be made through the printer's operator panel. The advantage to using the printer manager to manage your configurations is you may store a nearly unlimited number of configurations on your host computer.

Once you have made all of your changes, you may save your configurations as a `.cfg` file on your local hard drive. This way, you may choose to open any set of configurations from your host computer and download them into your printer quickly and easily.

To save configurations to your local hard drive, click **File** → **Save As**. You will be prompted to enter a file name. Be sure to save your configurations as a `filename.cfg` file.

Opening Configuration Files

To open a configuration file, click **File** → **Open**. The Configuration Editor loads the settings from the file you choose.

Remember, these settings will not affect the current configuration or the active printer status until the configurations are downloaded to the printer.

NOTE: The Configuration Editor displays one configuration file at a time. Be sure to save any changes before opening a different configuration file.

Downloading Configurations

You may use the Configuration Editor to download any configurations you have created into your printer. Open the configuration file you wish to use, then use the options under the **Download** menu to send individual configurations, all configurations, or just the configuration names.

Downloading a configuration deletes the corresponding configuration currently stored in the printer. If you wish to save the configurations currently stored in the printer before overwriting them, upload them into the Configuration Editor first and then save them as a `.cfg` file on your local hard drive.

Revert

The Configuration Editor contains a special feature which allows you to revert to a previously uploaded printer configuration.

Each time you start the Configuration Editor, the current configuration settings are uploaded from your printer's non-volatile memory. The Configuration Editor saves this information, and assigns a date and time to it.

Click on **File** → **Revert**, and you will be presented with a list of previous Configuration Editor sessions. Choosing the date/time stamp of any session restores the configuration settings which were uploaded from the printer at that time.

You may set the maximum number of revert sessions allowed in the **File** → **Preferences** screen of the Printer Database window. The default is 10.

Barcode Verification

The Barcode Verification application is currently not available for line matrix printers.

Configuration Download/File Download

For a detailed explanation on how to download configurations and files using the Printer Database, see [page 23](#).

Index

A

Applications, 33
Barcode Verification, 48
Configuration Download, 23
Configuration Editor, 41
File Download, 23
Information Capture, 39
Operator Panel, 36

B

barcode verification, 48

C

changing configurations, 43
Configuration Download
 using Configuration Editor, 47
 using Printer Database, 23
Configuration Editor, 41
 changing configurations, 43
 creating configurations, 42
 Menu Editor, 44
 menu tree, 42
Configuration Files
 downloading, 47
 opening, 47
 saving, 47
Configuration Printout, 40
Create new database file, 30
creating configurations, 42

D

Database tree, 14

defining access method, 17
Defining Printer Properties, 16
 network, 17
Deleting Configurations, 45
directory, 40
Downloading Files, 23

E

Edit Menu
 Printer Database, 20
Error Logs
 printer, 40
 printer manager, 15

F

File Download, 23
File Menu
 Printer Database, 30

G

Getting Started, 8

H

hardware requirements, 6
Hiding Menu Items, 45

I

Information Capture, 39
 configuration printout, 40
 directory, 40
Inserting item in database, 21
installation, 6
interfaces, 6

L

locating printers, 28

M

Menu Bar

- Printer Database
 - Applications, 33
 - Edit, 20
 - File, 30
 - Help, 35
 - Status, 34
 - Utilities, 35
 - View, 33

Menu Editor, 44

N

Naming Configurations, 45

network properties

- defining, 17
- locating printers, 28

O

Open database file, 30

Operator Panel, 36

- Primary Operator Keys, 37

P

password

- printer
 - setting, 35
- Supervisor Mode, 17
- User Mode, 17

Preferences, 30

Printer Database

- items, 20
- main window, 14
- menu tree, 14
- toolbar, 19

Printer Database Menu Bar, 30

Printer Properties

- access method, 17
- defining, 16
- password, 17
- printer description, 17
- printer name, 17

Printer Setup, 7

R

Reboot printer, 35

requirements, 6

Revert, 32, 48

RibbonMinder, 34

S

Saving database file, 30

set printer password, 35

software requirements, 6

Status and Error Log, 15

Status Menu

- Printer Database, 34
- RibbonMinder, 34

Supervisor Mode, 17

T

Toolbar, 19

Tutorial, 8

U

Unhiding Menu Items, 45

User Mode, 17

Utilities Menu

- Printer Database, 35

V

View Menu

- Printer Database, 33

viewing configurations

- using Information Capture, 39

viewing Error logs, 40



Copyright © 2000
Hewlett-Packard Company

**Manual Part Number
170988-001PX**

170988-001A